

Hanlin eReader V3+

USER MANUAL

Version 7

Content

Safety Notice	1
Structure.....	4
Operation	6
Installing Battery	6
Charge.....	6
Installing SD card	8
Switch On/Off.....	9
Switch on	9
Switch off	10
Keyboard Lock	11
Search	11
Searching by page up/down button	11
Search by sorting	13
Search by category	14
Recently Reading.....	15
Shift Bookshelves	16
Reading eBooks.....	17
Page Turning.....	17
Page turning by sequence	17
First/Last Page	18
Page Jump.....	19
See Catalog	20
Zoom In/Out	22

Rotate (only for PDF & EPUB formats)	24
Search (only for PDF & EPUB formats).....	25
PDF File Reading Mode Shift (Not all the versions can support this function)	28
Information of Book	29
How to read hyperlink (only for PDF & EPUB formats).....	30
Bookmark	31
Bookmark for PDF & EPUB formats.....	31
Bookmark for other formats	33
Adjust the contrast and brightness of pictures.....	35
Audio	37
Settings	38
Key Sound	39
Language Setting	40
Replace Font	41
About	42
Displaying Modes.....	43
Time & Date	44
USB Connection	45
Exception	46
Specifications.....	47
After-sales Service Guide	48

Safety Notice

For safely and efficiently use the product, please strictly abide by the rules, otherwise the danger will happen.

Do not put the product under the direct ray of sunlight, and use or put it in the extra high and low temperature environment. If you do these otherwise, that will cause the distortion of the product and damage of the electronic component and battery.

Do not put or use it in humidity environment. Do not let liquid immerge into the product, affected with water and damp will cause the malfunction of operation of the internal circuit.

Put the product on a stable place, violently shake or fall off will cause the damage of the product and its electronic component.

Do not heavily press the display or put heavy on the display, prevent the display from breaking or hurting people.

Do not put the product in the dust, dirty place and the place full of erodent air.

Do not use chemical solvent to clean the surface of the product. Please use the soft cloth to wipe up the dust from the surface of the screen or the cover. You can use a little distilled water to erase the dirty on the screen or the cover.

Do not privately disassemble the product. Only the qualified maintenance man of our company or authorized maintenance center can assemble the product.

Please pay attention to put the product or its fittings on the place, which the children cannot reach.

Do not put the product near the magnetic field; prevent it from disturbing of the magnetic field.

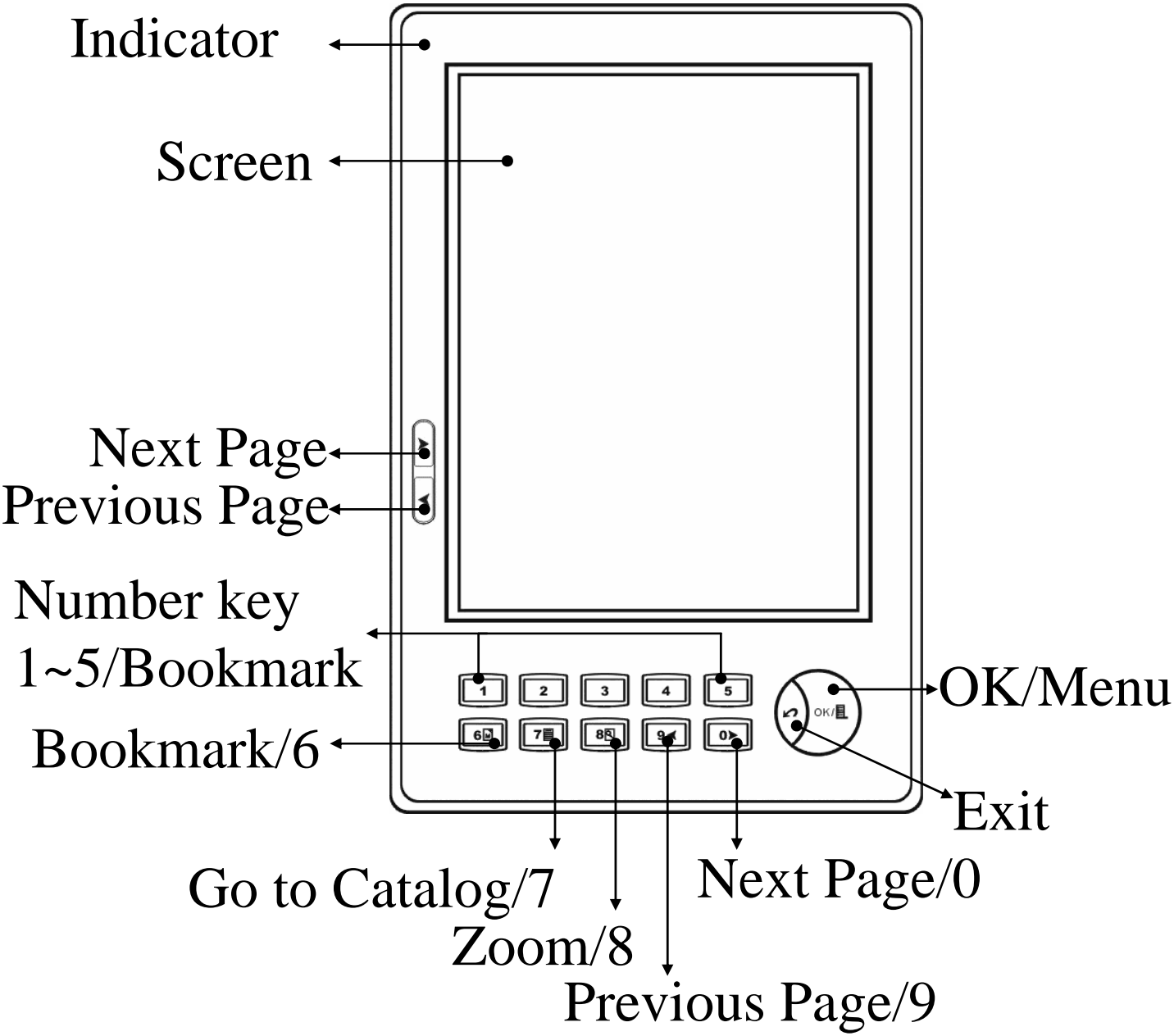
Please use the authorized fittings, do not use unmatched components.

Battery:

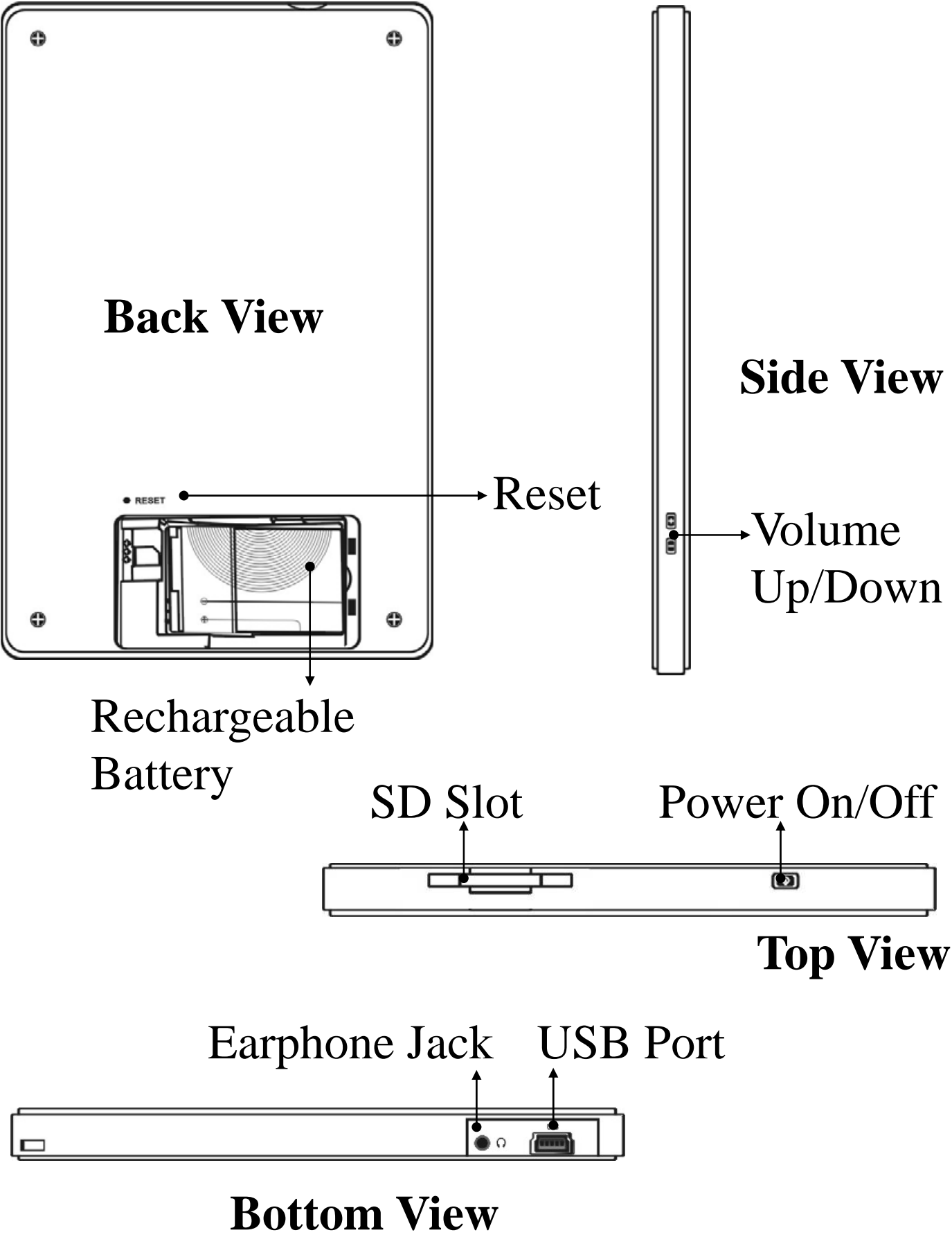
- * Do not use the rechargeable battery with damaged surface.
- * If battery leaks liquid, please clean the product and put the new battery. If the liquid drops on your body, please carefully clean it.
- * Please properly dispose the old and waste batteries.

This product is CE approved.

Structure



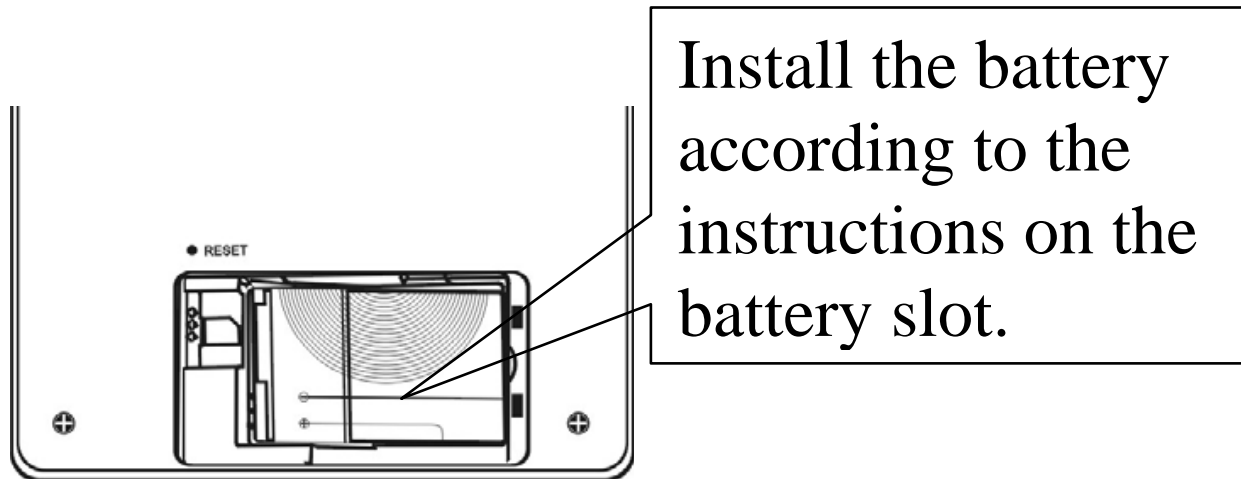
Front View



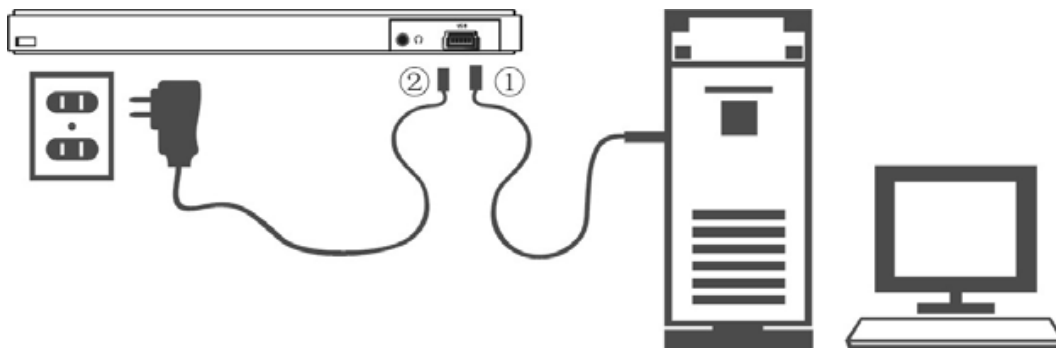
Operation

Installing Battery

Open the battery cover on the back of the device.



Charge



* The Power supply of this product is by rechargeable battery.

* It can be charged by USB cable①. Use one port of the USB cable to connect the PC, the other port connects the device. It takes approximately four hours to charge the battery. The orange light will flash while

the battery is charging and green light will shine steady when the battery is fully charged.

* It can be also charged by power adapter②. Connect the device with the power adapter, and plug the power adapter in the socket (please see the voltage scope on the adapter). It takes approximately four hours to charge the battery. The orange light will flash while the battery is charging and green light will shine steady when the battery is fully charged.

* Do not remove the battery while charging.

* Battery volume icon is on the bottom right corner, when the icon shows one grid volume or system informs low battery volume, please charge the battery.



Full —————> Lack

* The device can be used while charging, but the charging time will be increased.

* If the power of the battery is extremely low, while the battery is charged, the indicator maybe in red. When the indicator is in red, the device can not be switched on. After the battery is fully charged, the device can work again.

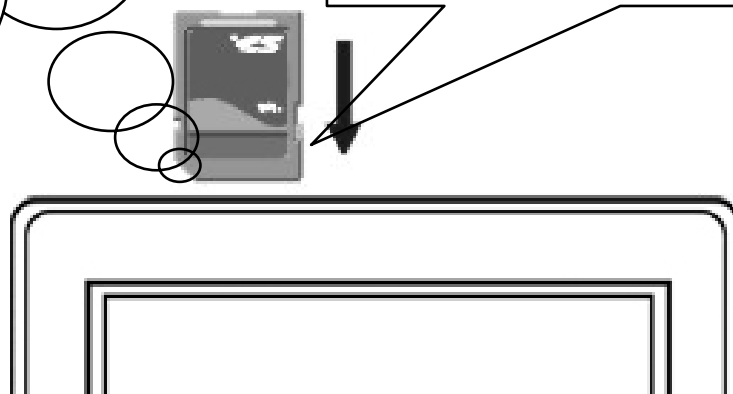
* Do not use unauthorized battery and charger.

* Do not constantly remove the battery.

Installing SD card

Insert the SD card with the label facing up by the arrow directed.

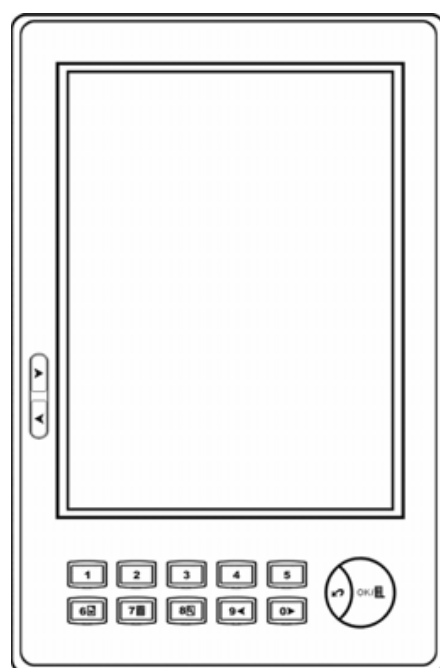
After inserting SD card, bookshelf interface will be automatically displayed. To remove the SD card, push in the SD card until you hear a click, then release it.



Switch On/Off

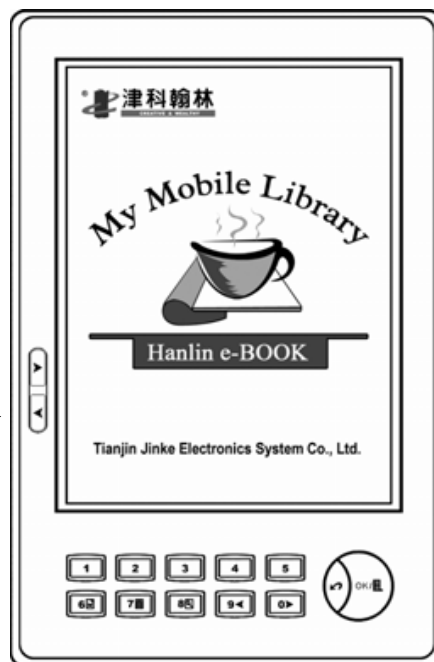
Switch on

Press switch on/off button to power on.



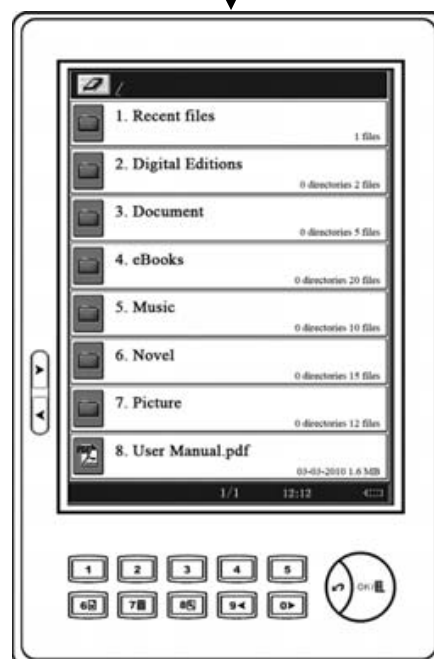
Power off

Power
On/Off →



LOGO

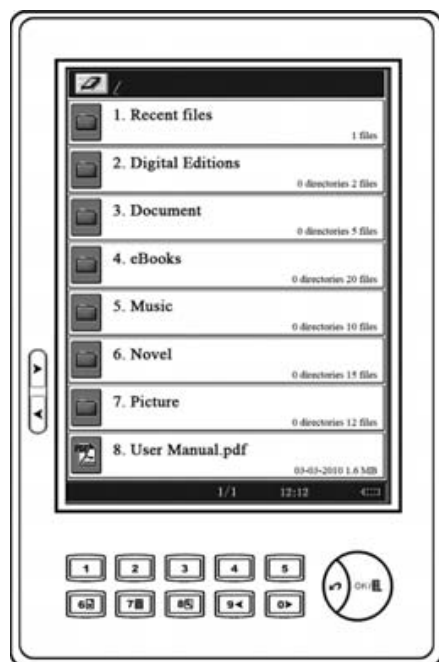
Automatically
enter



Bookshelf

Switch off

Long press switch on/off button for power off.

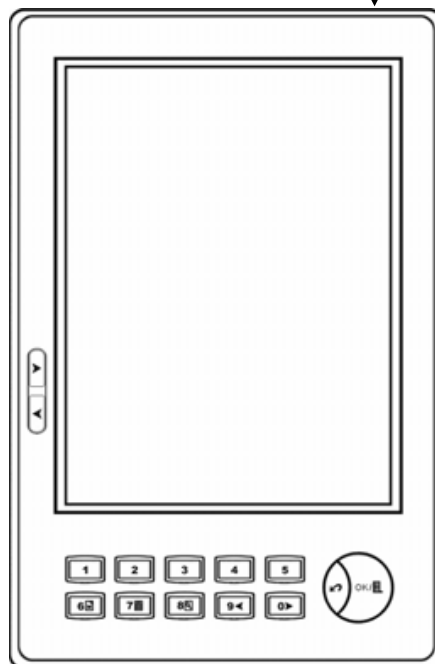


Any interface

Long press
power on/off



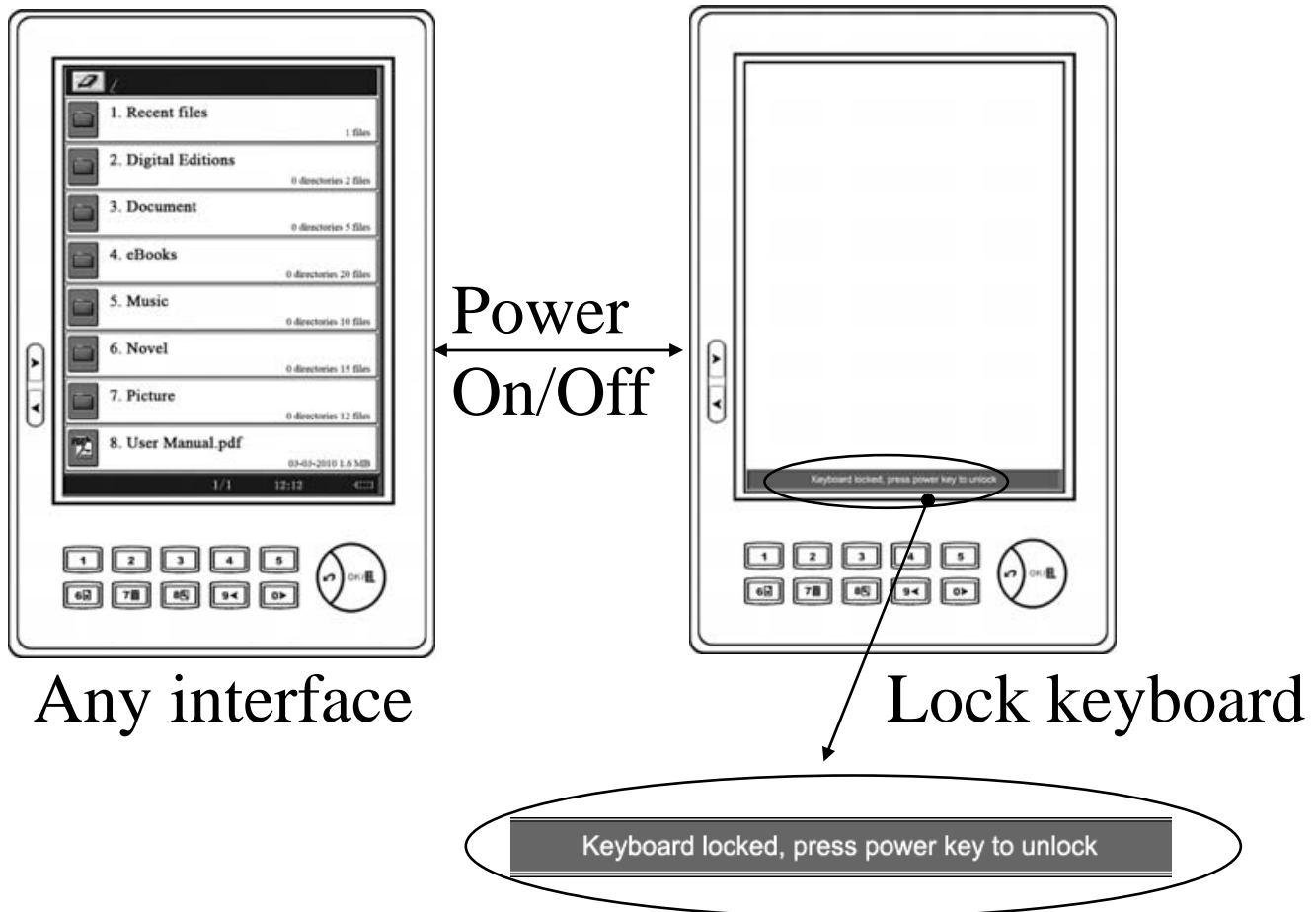
Power off interface



Power off

Keyboard Lock

Press switch on/off button, lock/unlock keyboard.



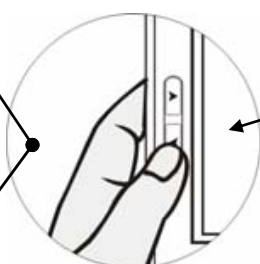
Search

Searching by page up/down button

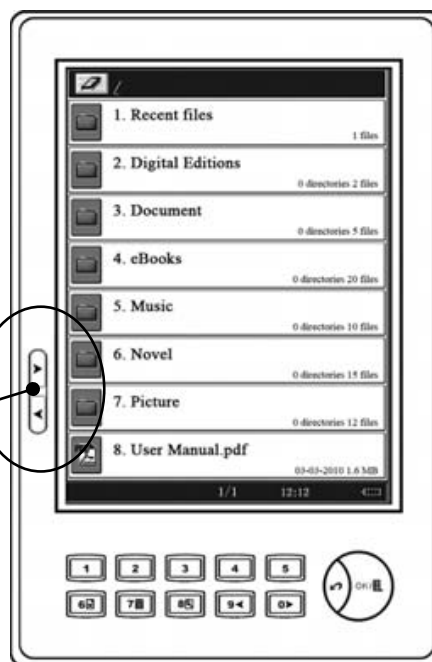
Under the bookshelf interface, each page displays eight titles. Press page up/down button to previous or next page; Long press the page up/down button to turn ten

pages at one time. User can use number keys (1~8) to select the title for reading.

Quick press to previous or next page



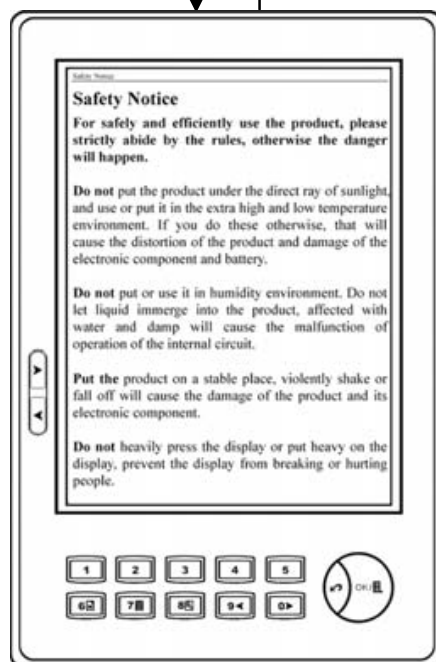
Long press to turn 10 pages at one time



Bookshelf

1~8

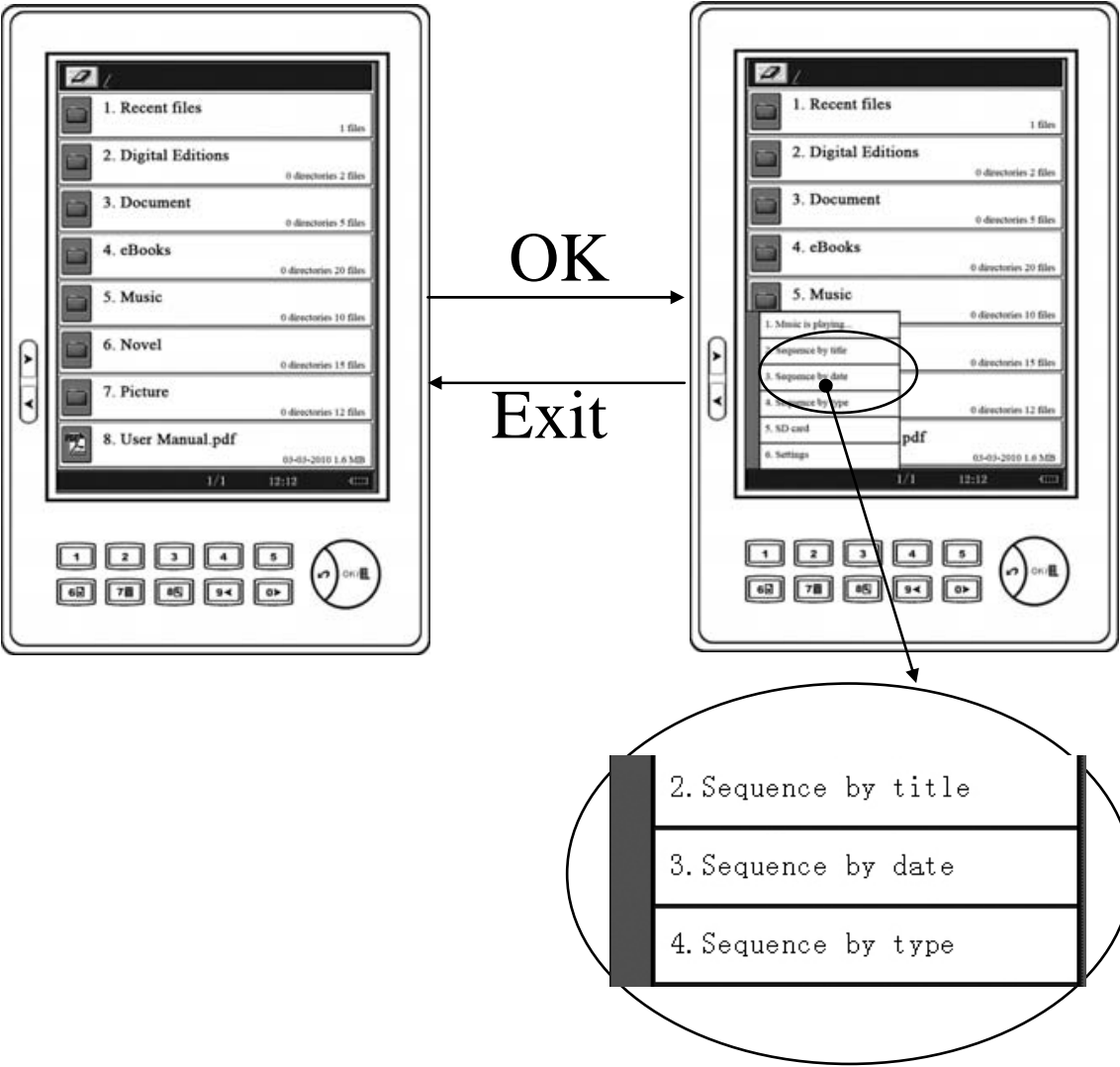
Exit



Text

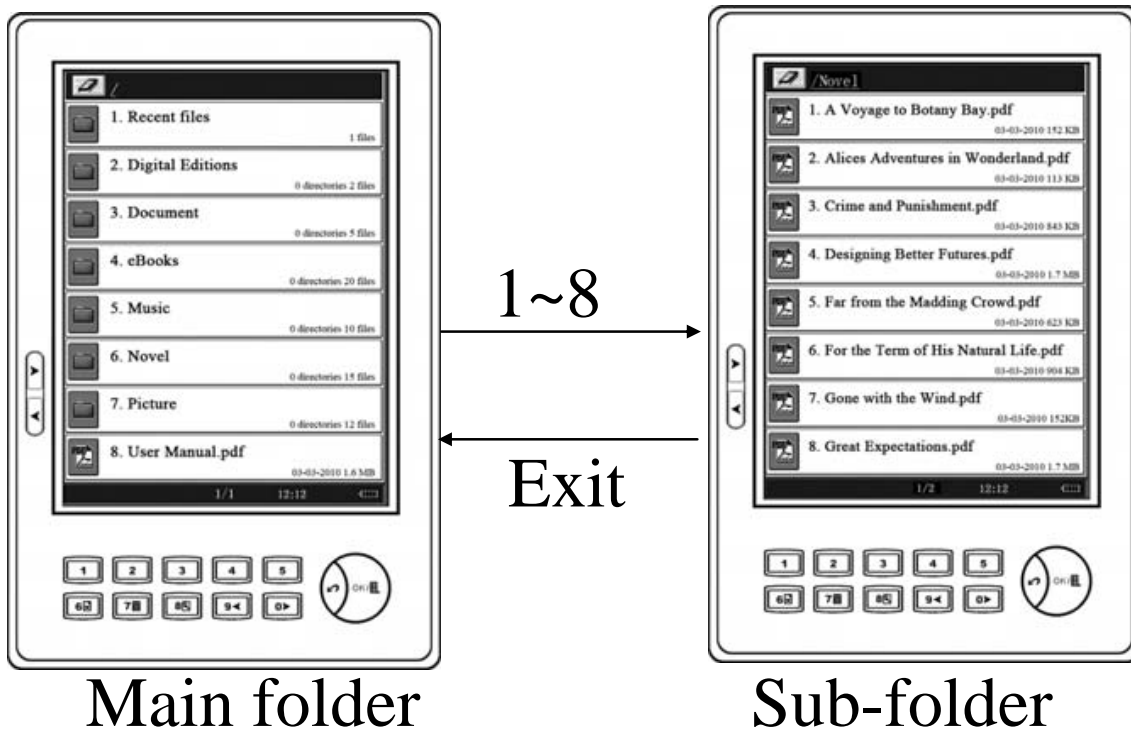
Search by sorting

Under the bookshelf interface, press OK to display the menu, press the number keys 2~4 to choose the order methods.



Search by category

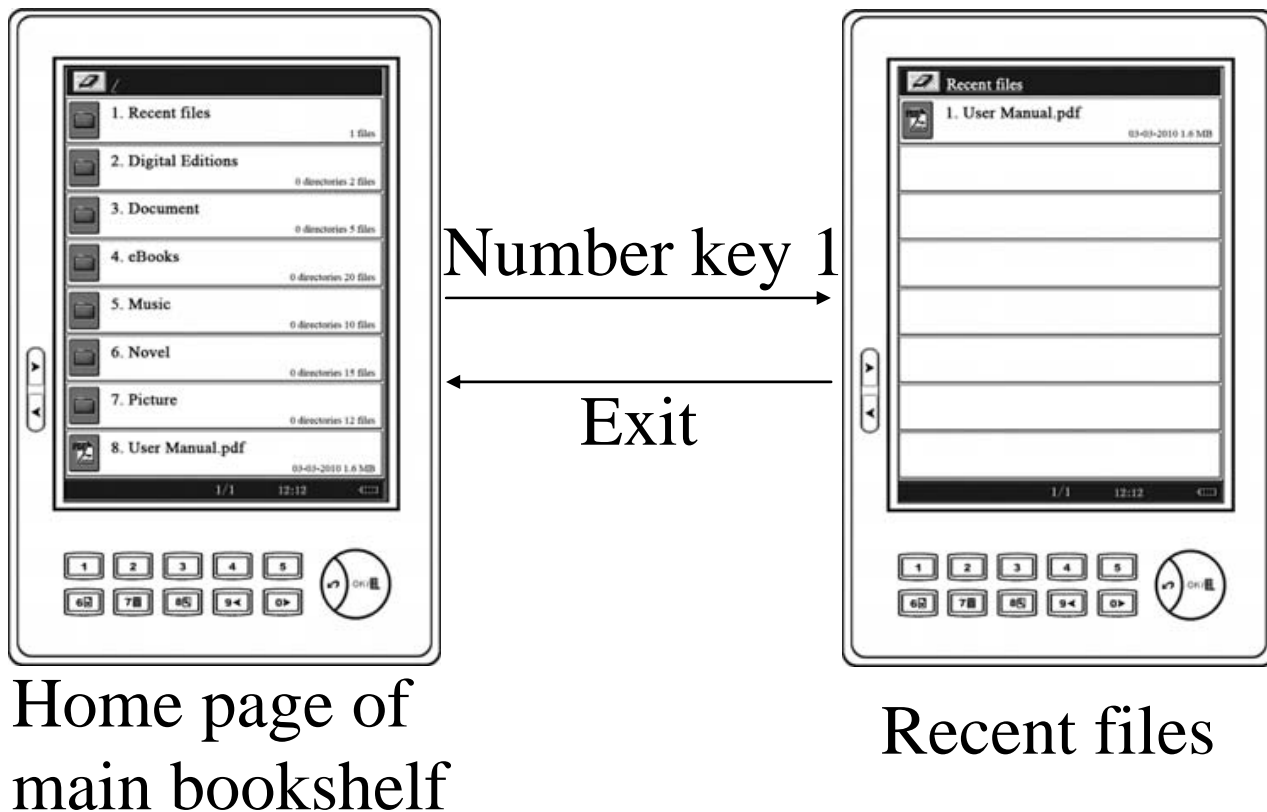
User can save the books of a sort in the same folder. The device can support multi-level folder. Press the number keys (1~8) to enter into the sub-folder.



Recently Reading

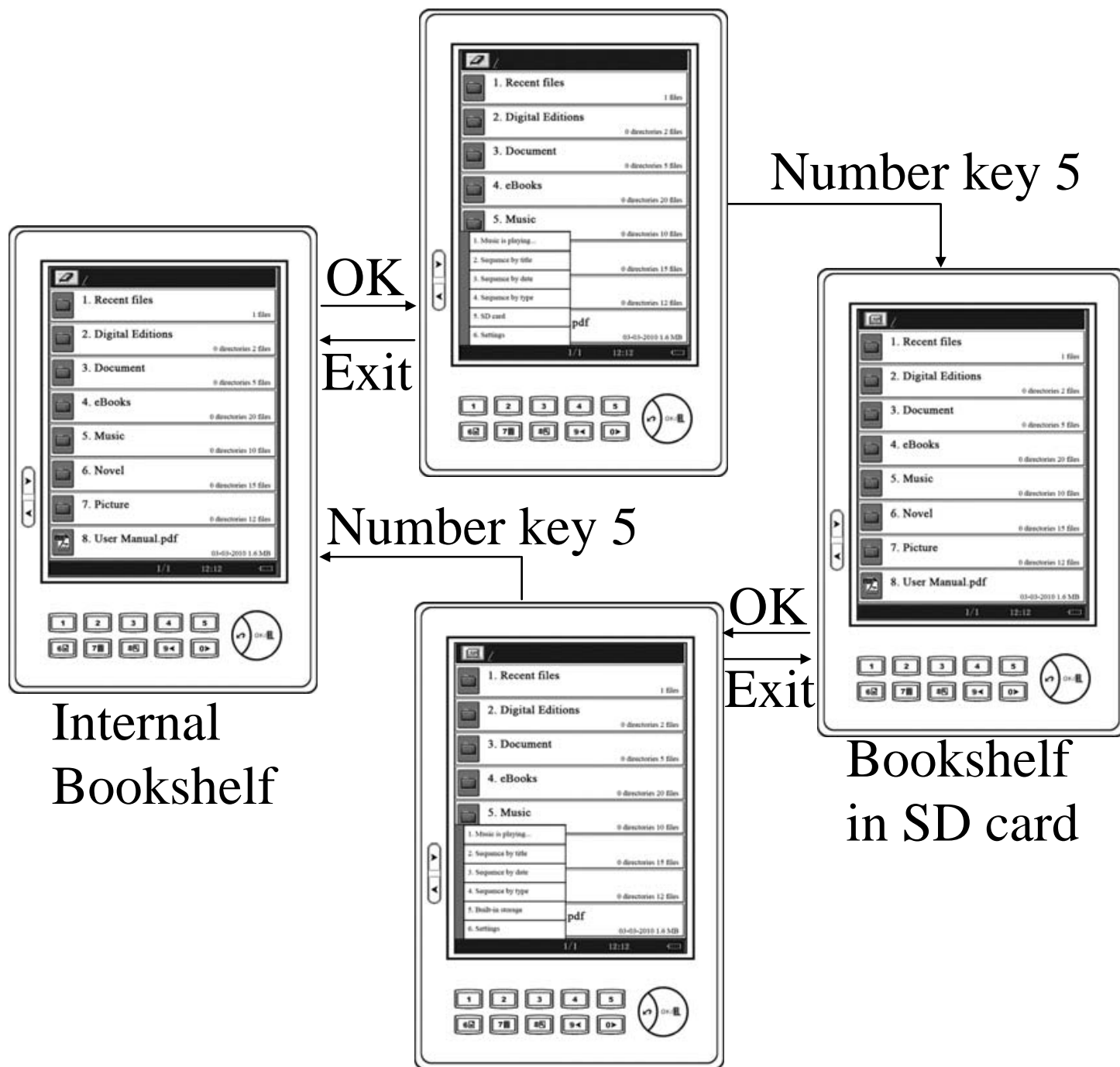
Recently Reading: The books which recently read can be saved in the “Recent files” folder.

In the home page of the main bookshelf, press the number key 1 to enter into “Recent files” folder.



Shift Bookshelves

Under the bookshelf interface, press OK to show menu, press the number key 5 can shift between the bookshelves of SD card and internal bookshelves.

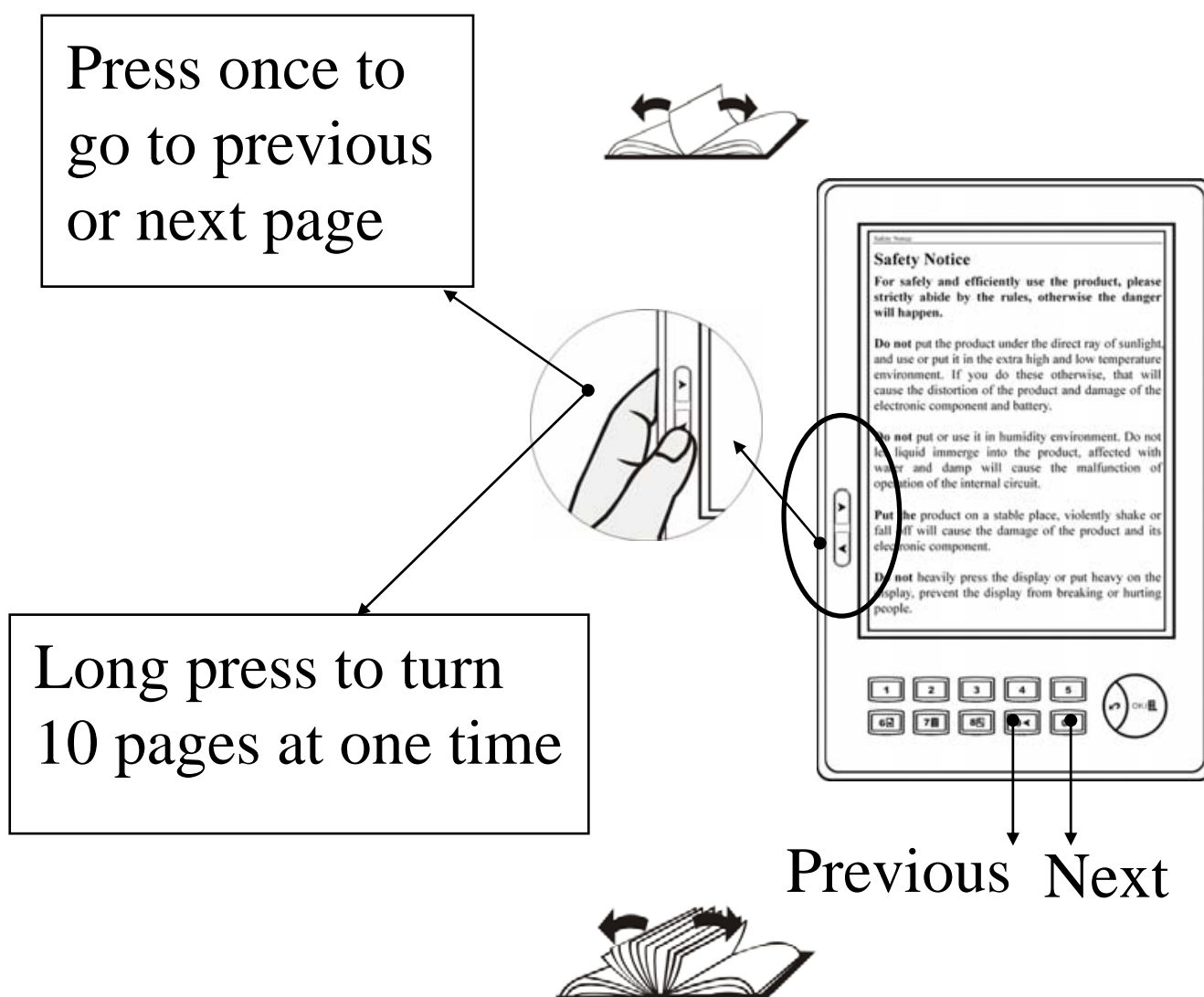


Reading eBooks

Page Turning

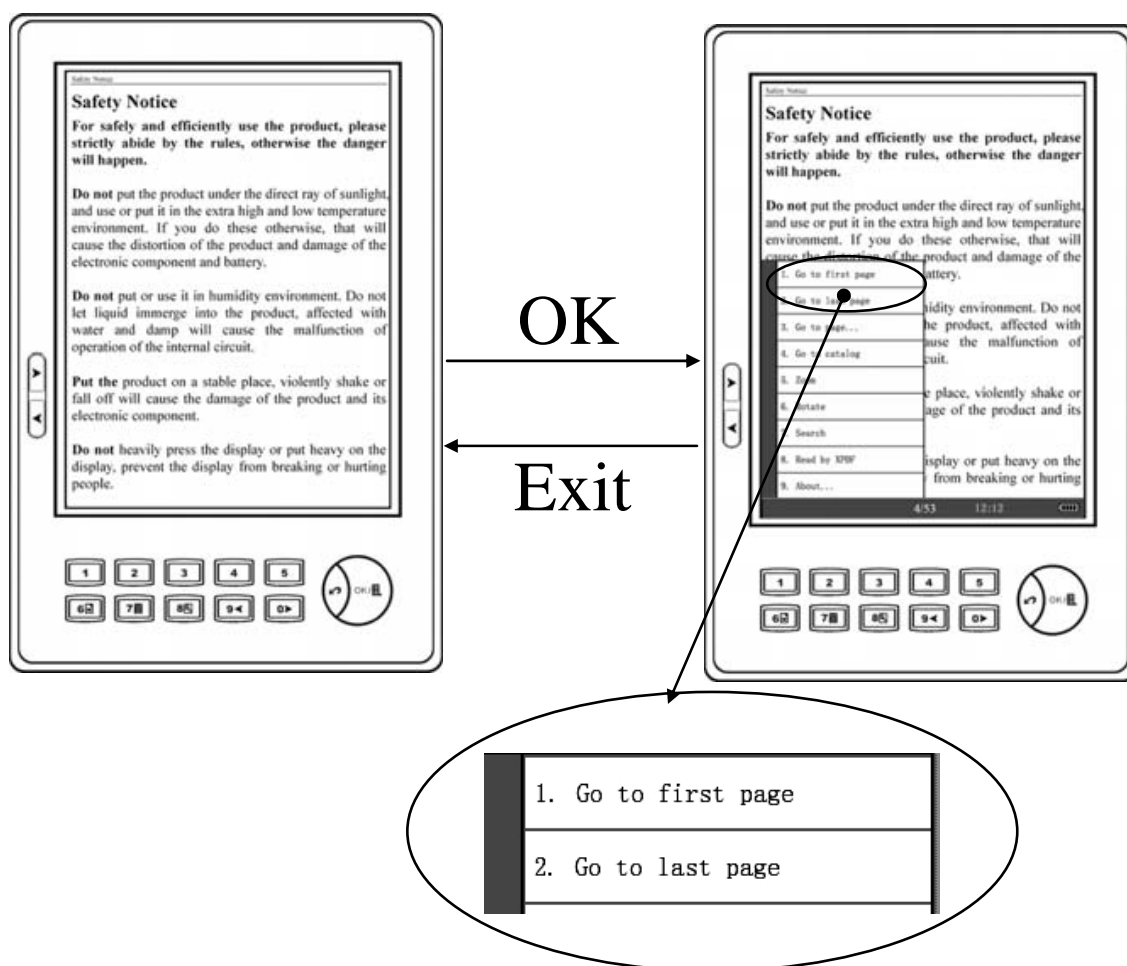
Page turning by sequence

Under the text interface, press page up/down button or number key 9 and 0 to turn pages by sequence.



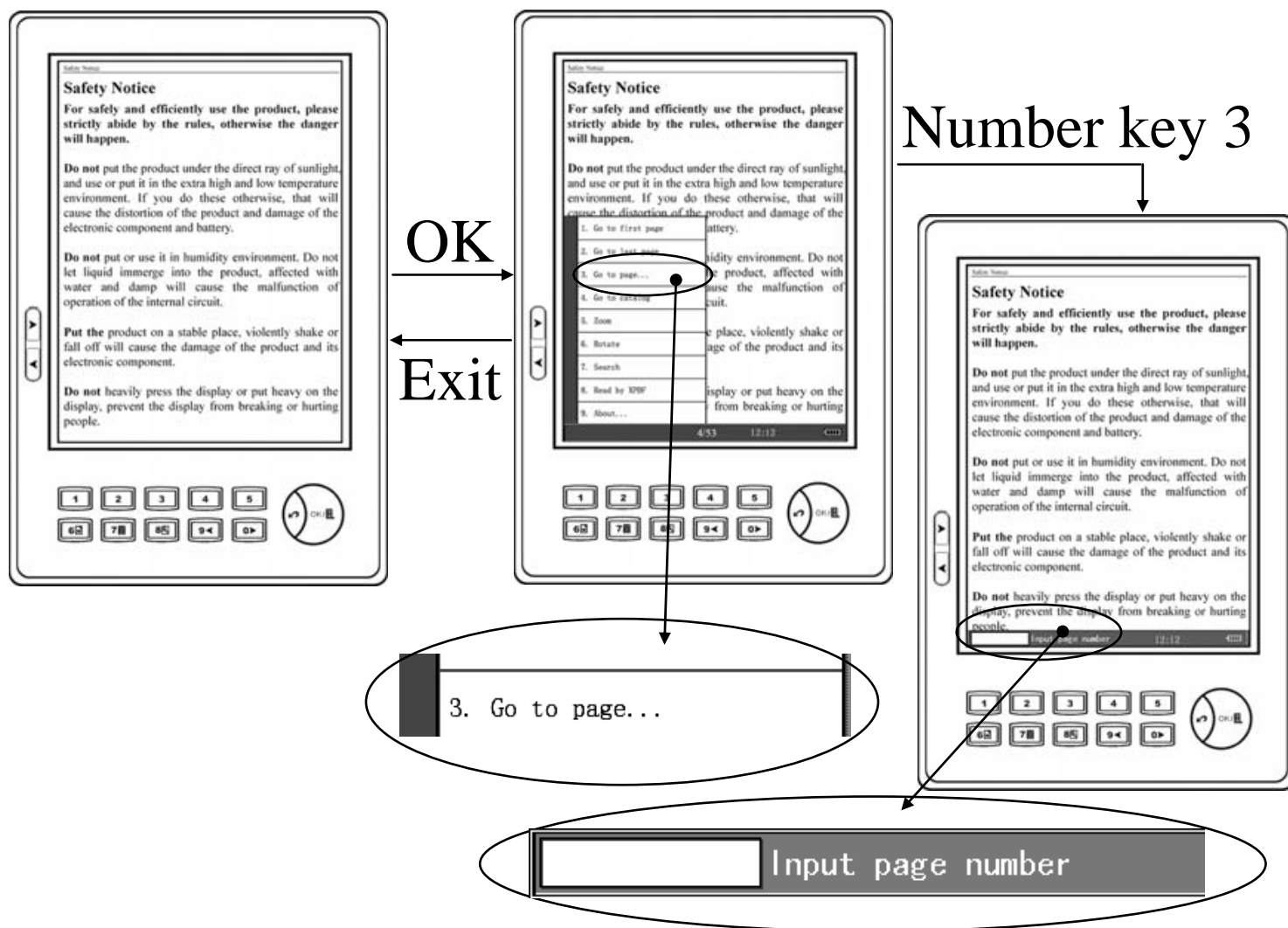
First/Last Page

Under the text interface, press OK to display the menu, then press the number key 1 to display the first page; press the number key 2 to display the last page. (Images file don't support this function.)



Page Jump

Under the text interface, press OK to display the menu, then press the number key 3 to enter into the jump page function. (Images file don't support this function.)

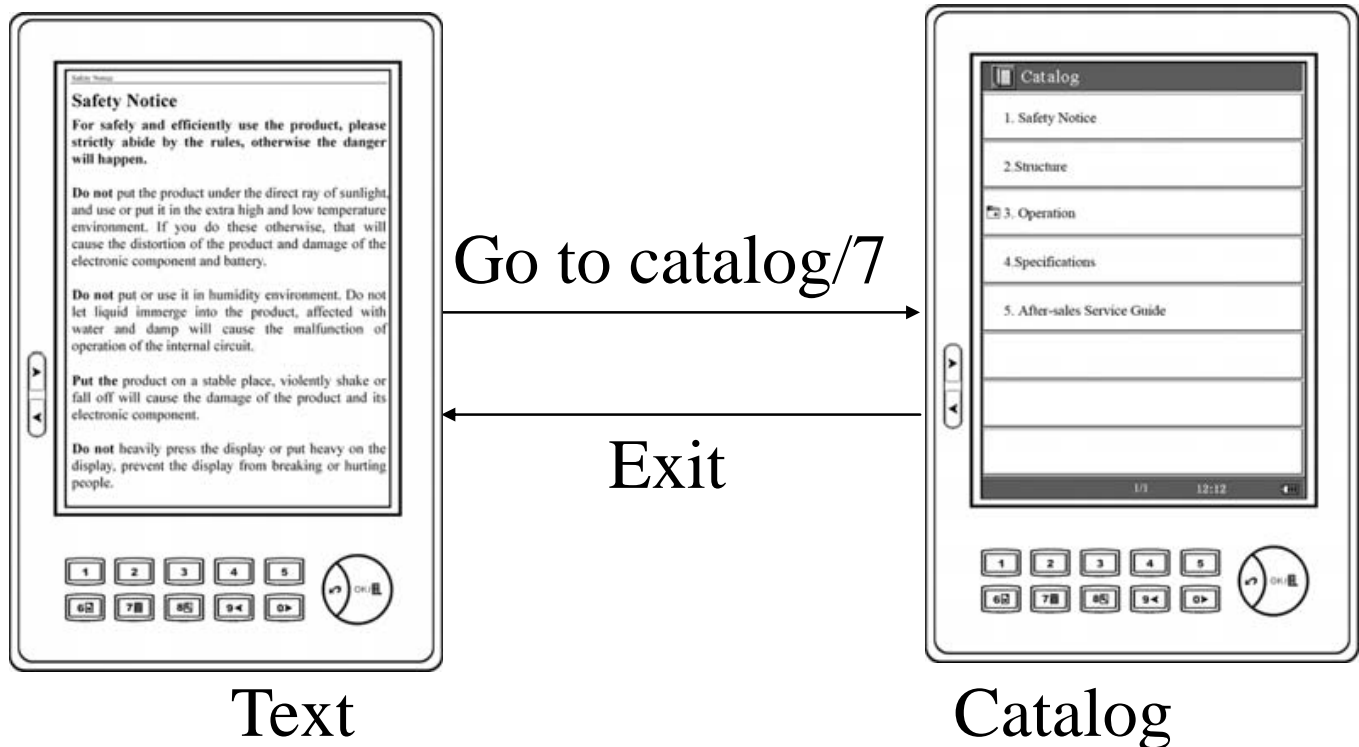


Press the number keys 0~9 to enter the page number and press OK to jump page.

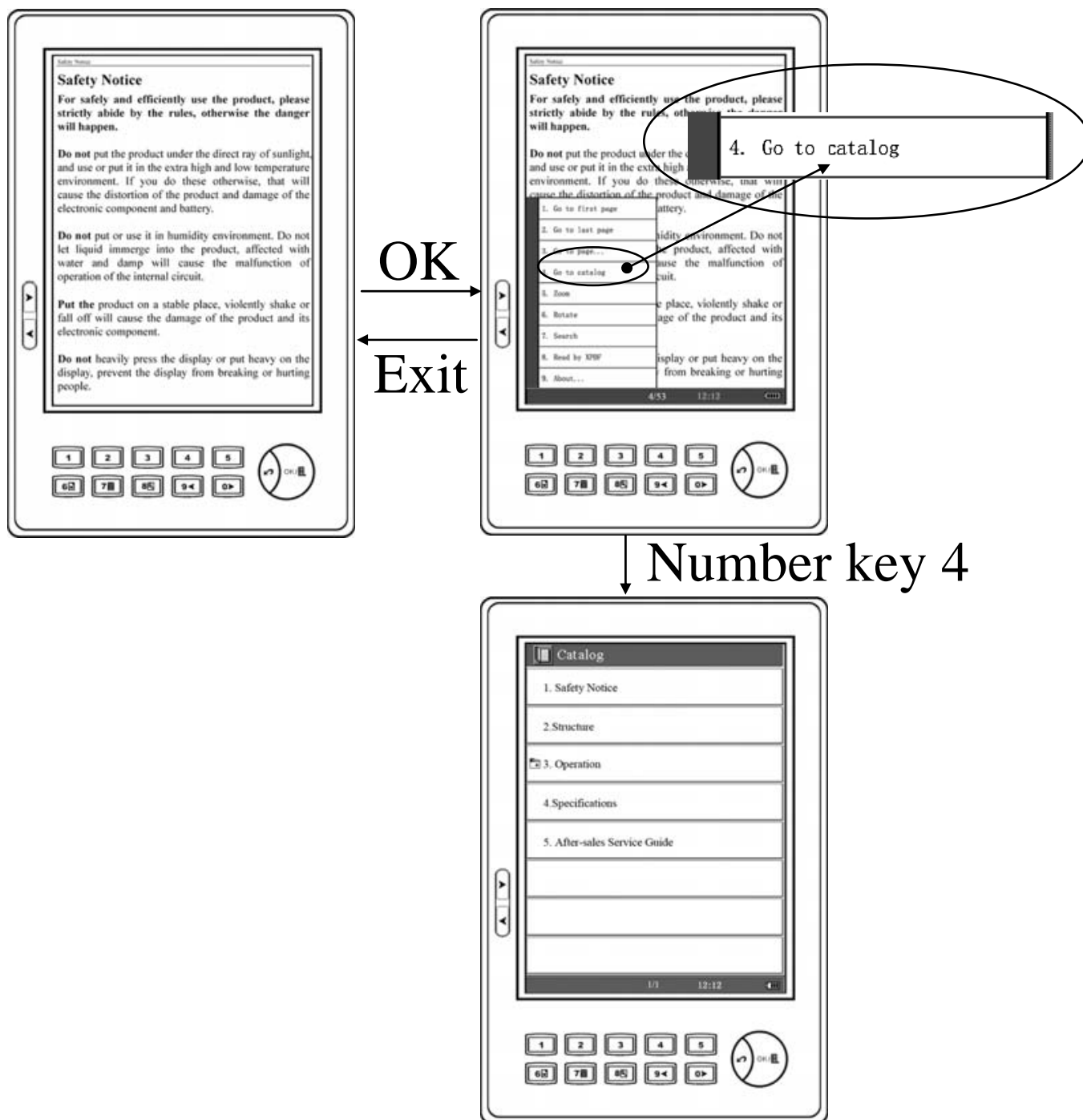
During process of entering the page number, press Exit to delete the entered number. If no page number entered, press Exit to quit this function.

See Catalog

Under the text interface, press the number key 7 to enter into the catalog interface, the system can support multi-level catalogs. Press the number keys 1~8 to enter into the catalog of next level, if the current catalog is the last level catalog, press the number keys 1~8 go to the chapter of the book or press Exit to return to previous level catalog. (TXT, HTML, Images file don't support this function.)



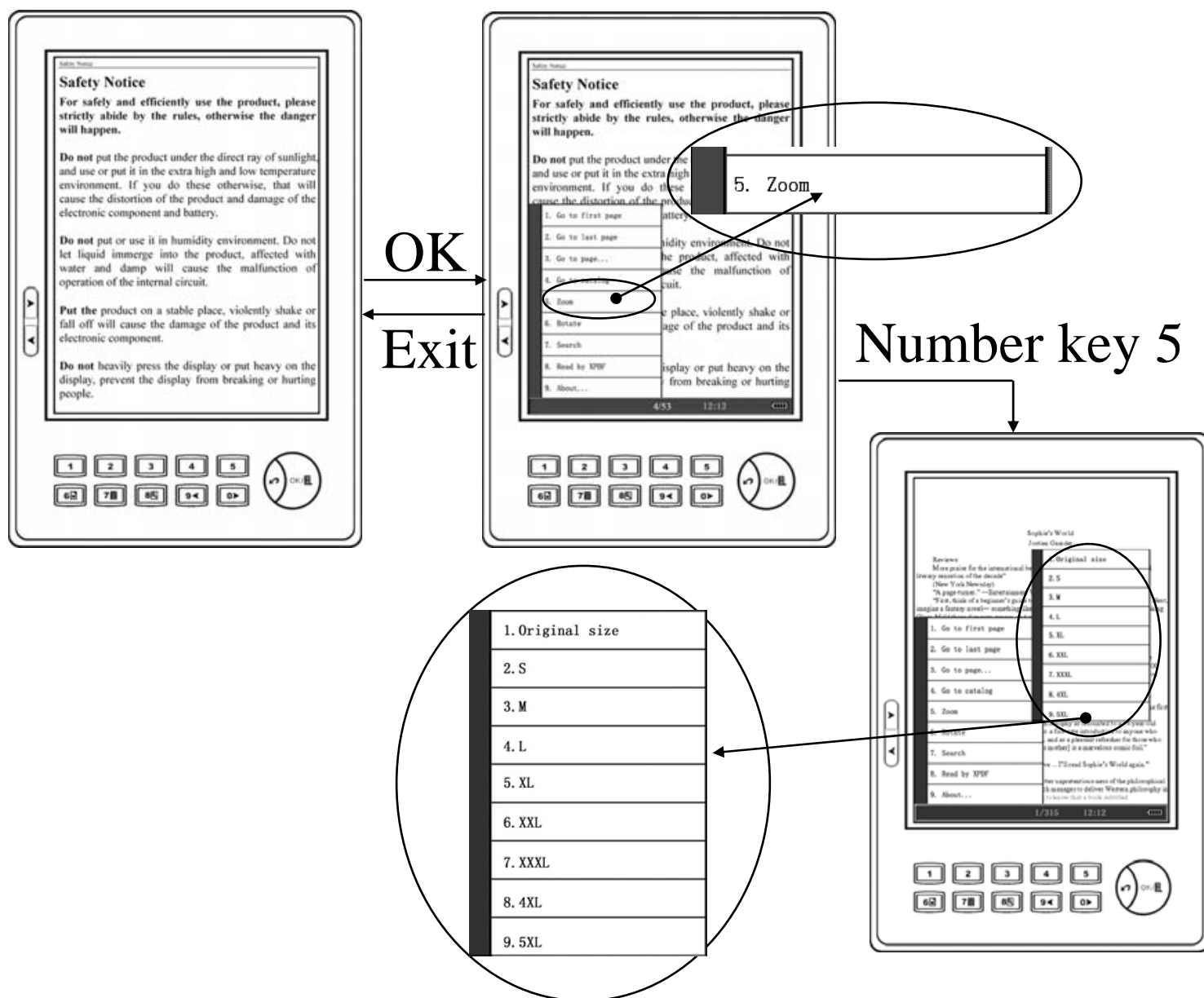
Under the text interface, press OK to display the menu, and select “Go to Catalog” by pressing 4.



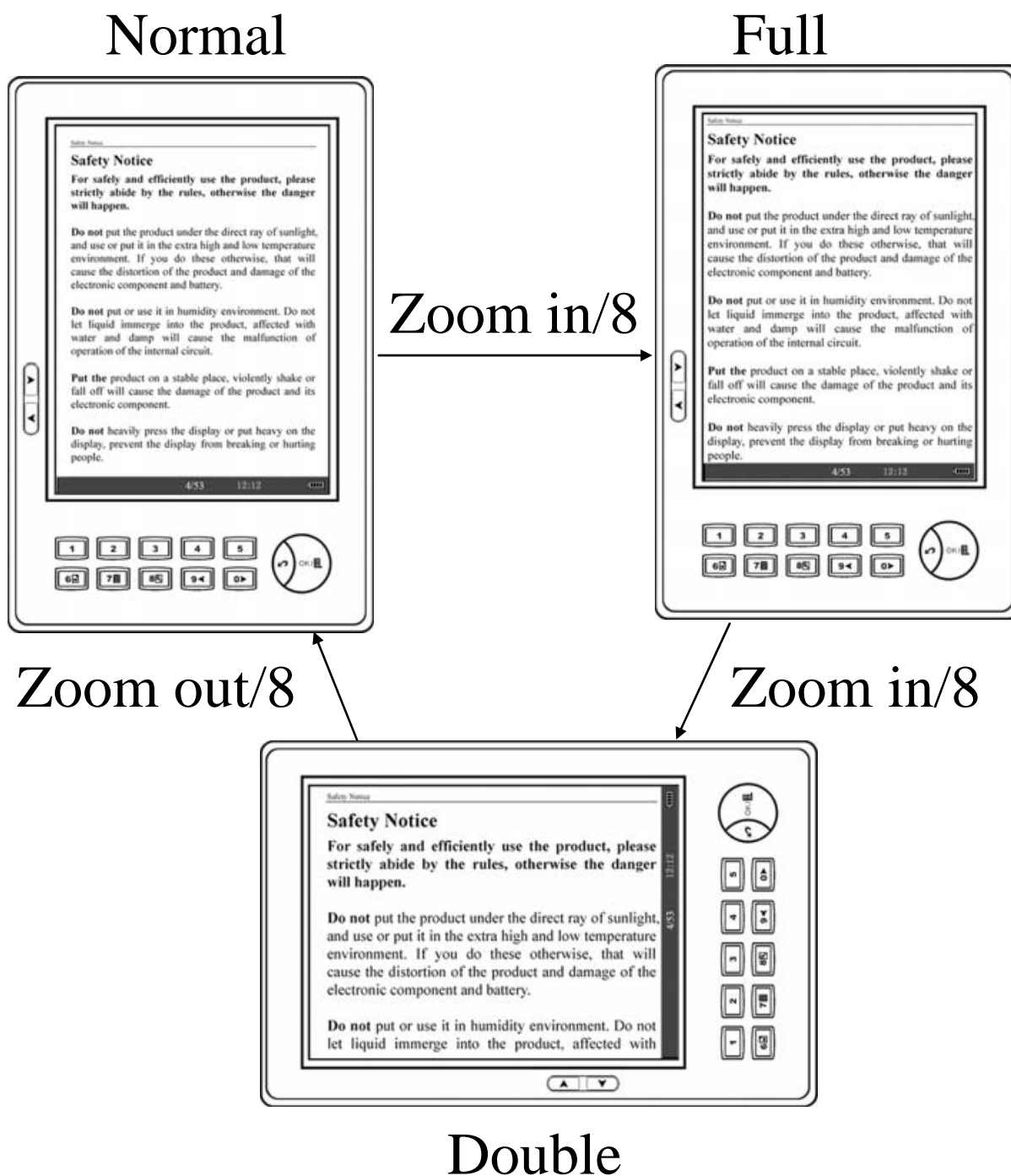
Zoom In/Out

Under the text interface of ePub file, press OK button, after the menu appearing, press the number key 5 to go to the “Zoom” function, after the sub-menu appear, press the number keys 1~9 to select the font size. (PDF file supports this function under ADOBE reading mode.)

Under the text interface, press the number key 8, it can change the font size gradually.

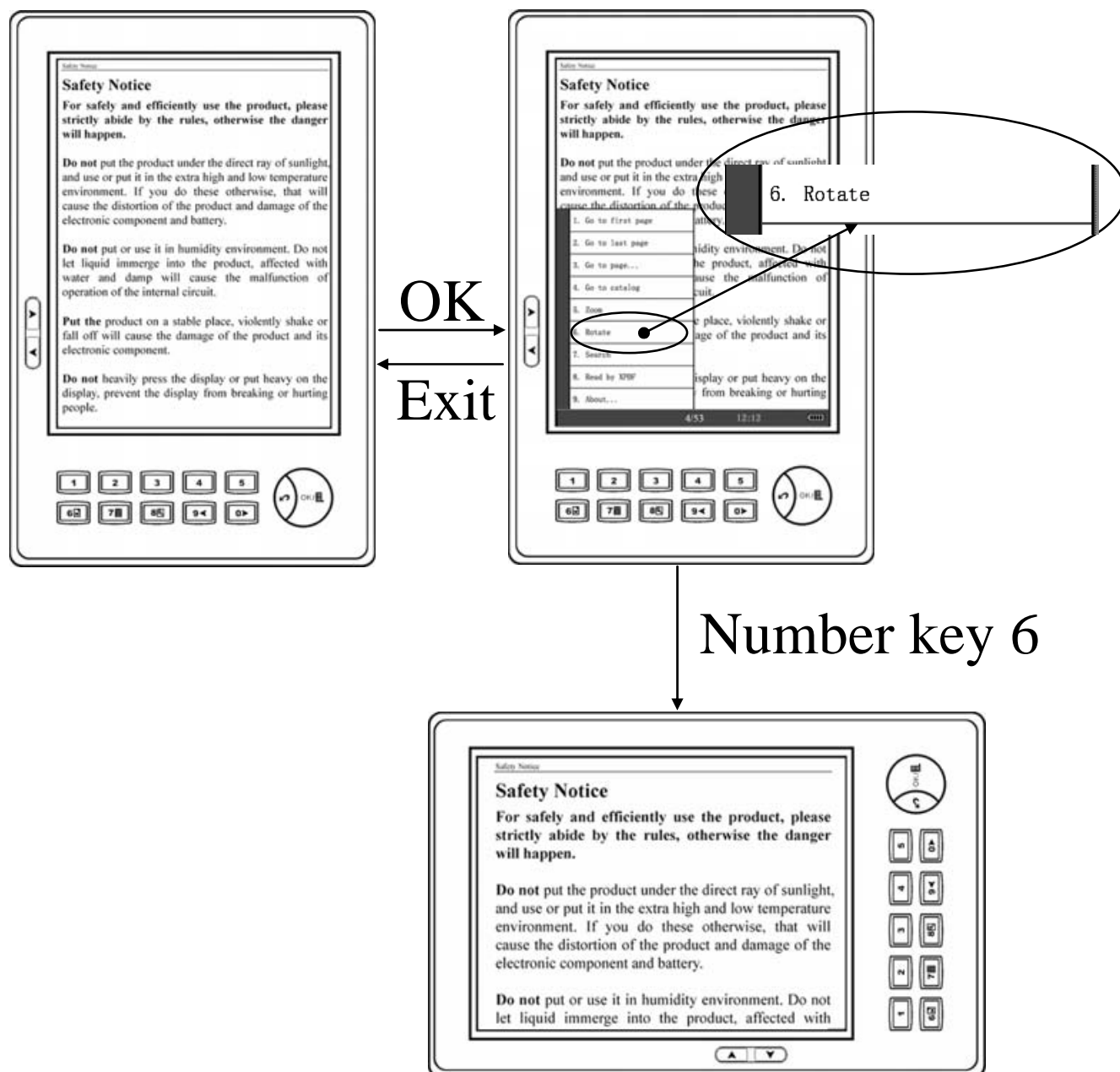


For other formats, press the number key 8 to zoom in in three levels: Normal, Full Screen, Double. Under the Double mode, the text will be automatically horizontal displayed.



Rotate (only for PDF & EPUB formats)

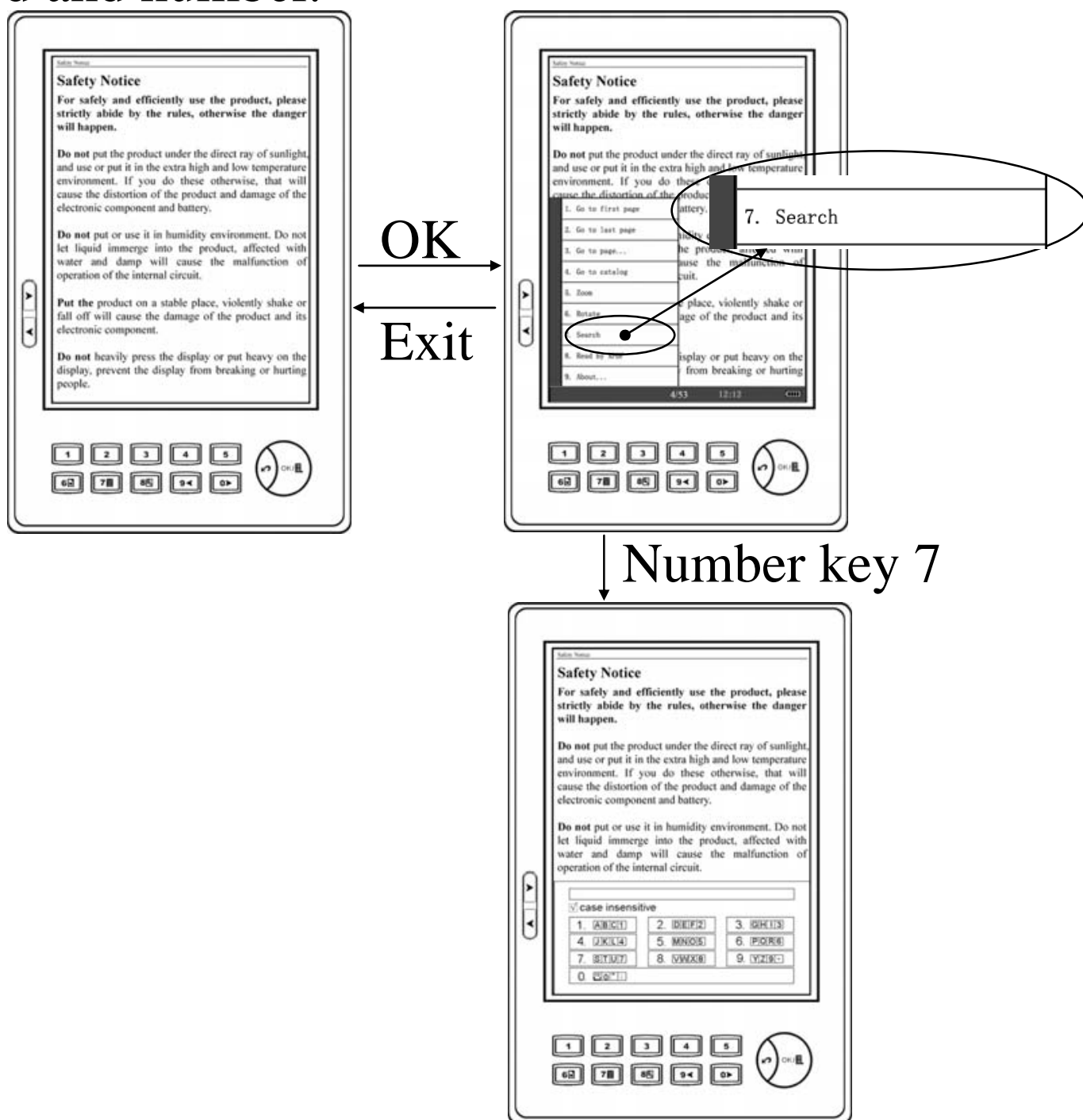
Under the text interface of EPUB file, press OK button, after the menu appearing, press the number key 6 to go to the “Rotate” function, the current text will be rotated in 90 degrees. (PDF file supports this function under ADOBE reading mode.)



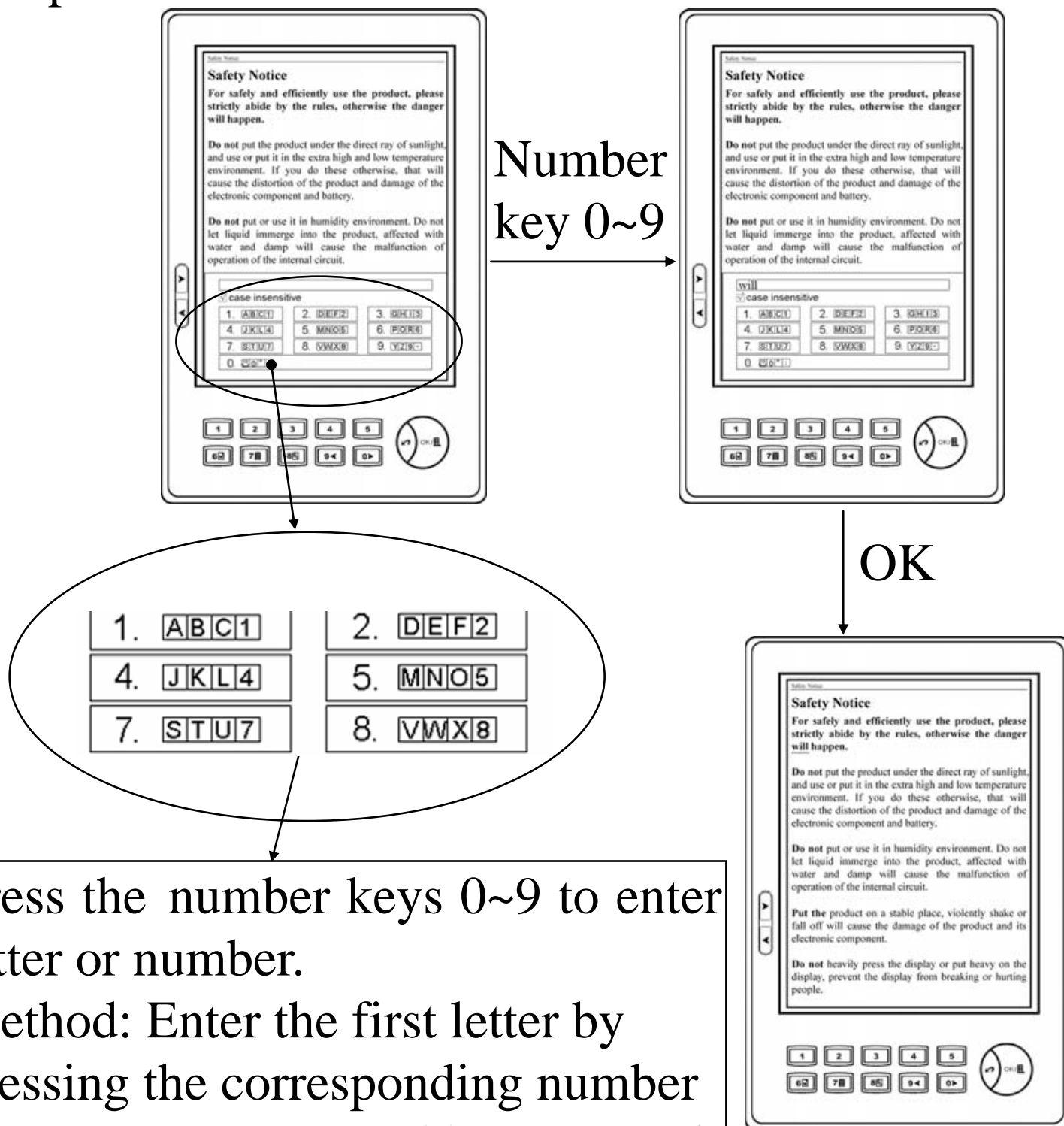
Search (only for PDF & EPUB formats)

Under the text interface of EPUB file, press OK button, then select “Search” by pressing number key 7. (PDF file supports this function under ADOBE reading mode.)

Note: This function only for the search for English word and number.



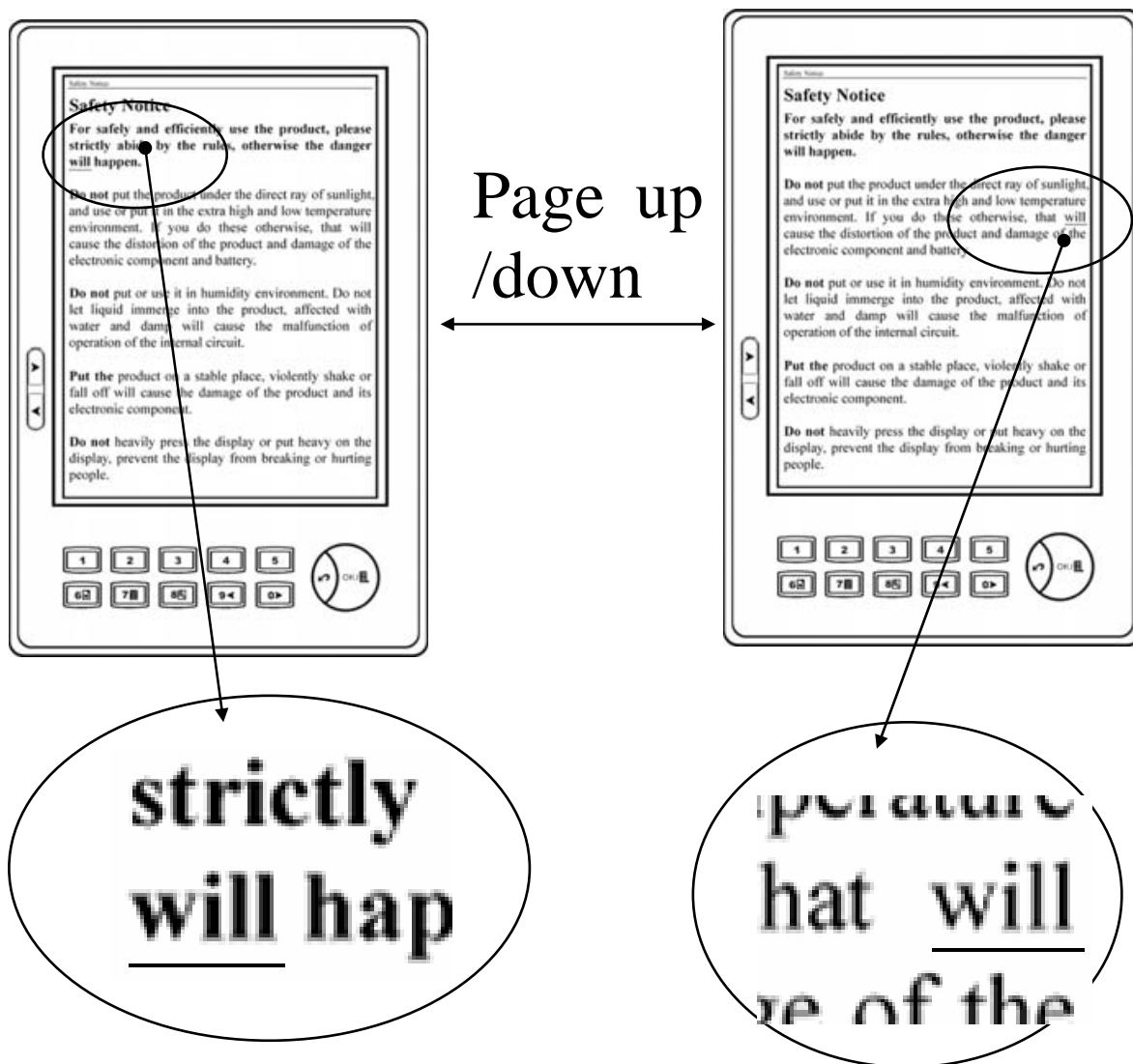
Press the number keys 0~9 to enter the searched word, then press OK to start the search.



Press the number keys 0~9 to enter letter or number.

Method: Enter the first letter by pressing the corresponding number key once; enter second letter, press it twice. E.g. enter letter D, press number key 2; enter letter O, press number key 5 in three times.

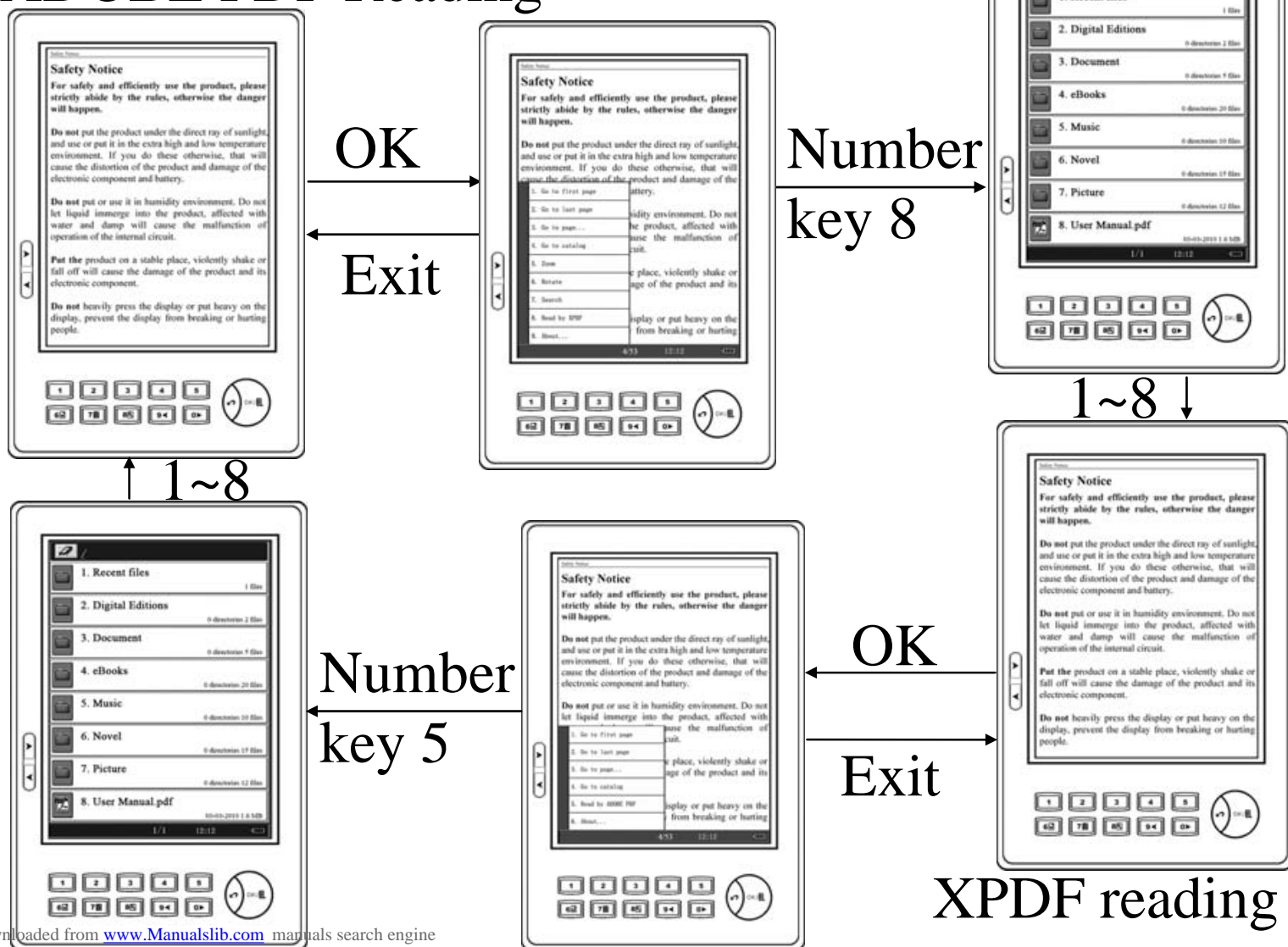
During the search, press page up/down buttons to search the following lines of the article. Press Exit to quit the search.



PDF File Reading Mode Shift (Not all the versions can support this function)

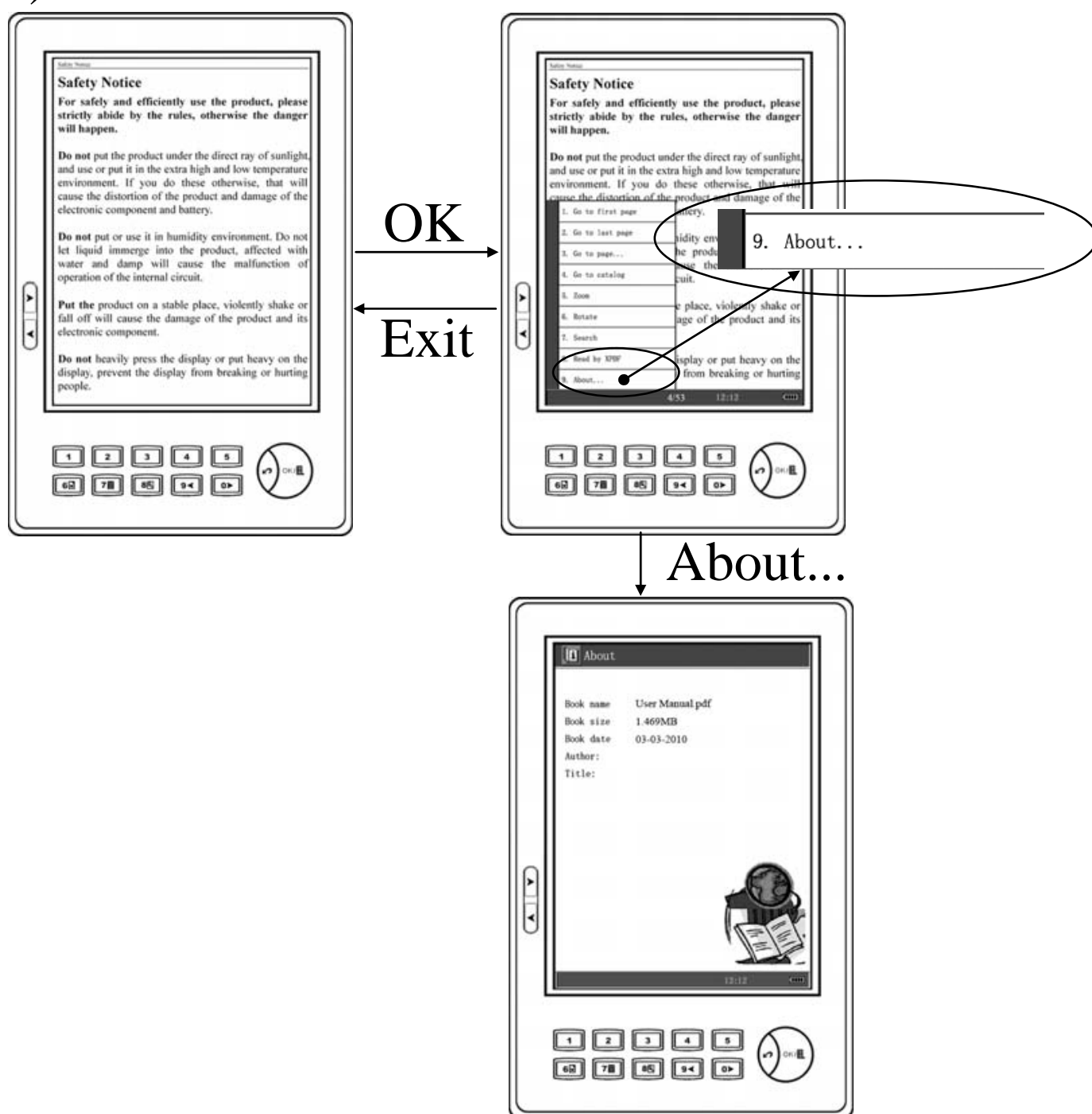
There are two reading modes for PDF file: “ADOBE PDF reading” and “XPDF reading”. Under the text interface of PDF file, press OK button, then press the number key 5 or 8 to choose “ADOBE PDF reading” or “XPDF reading”, after mode shift, the current file will be automatically closed, and the interface will go back to bookshelf interface, then please re-open the file.

ADOBE PDF Reading



Information of Book

Under the text interface, press OK to display the menu, and select the “About...” by pressing the number key, then all the information of the book will be displayed, which include author, file name, publisher, publishing date, copyright etc. (Different book may have different items.)

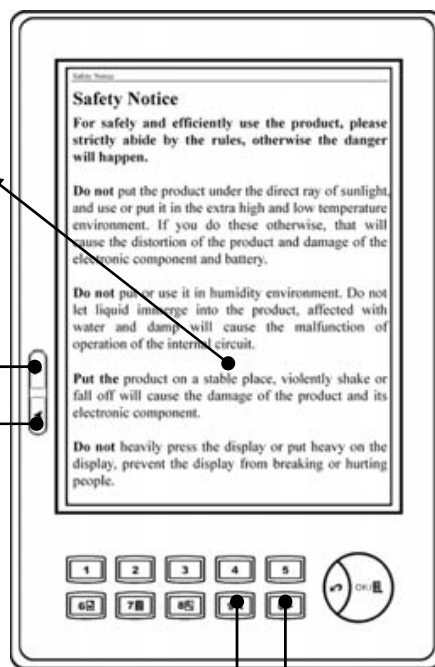


How to read hyperlink (only for PDF & EPUB formats)

Under the text interface of EPUB file, if the current page has hyperlink, press the number key 9 or 0 to select the hyperlink, and press OK button to skip to the linked page (PDF file supports this function under ADOBE reading mode.).

No hyperlink in current page

Next
Previous



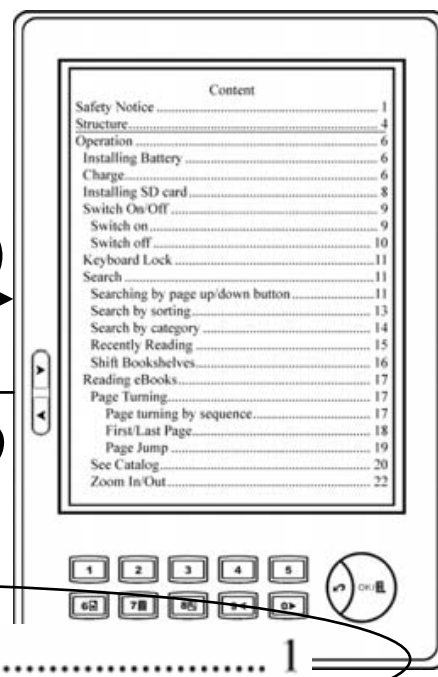
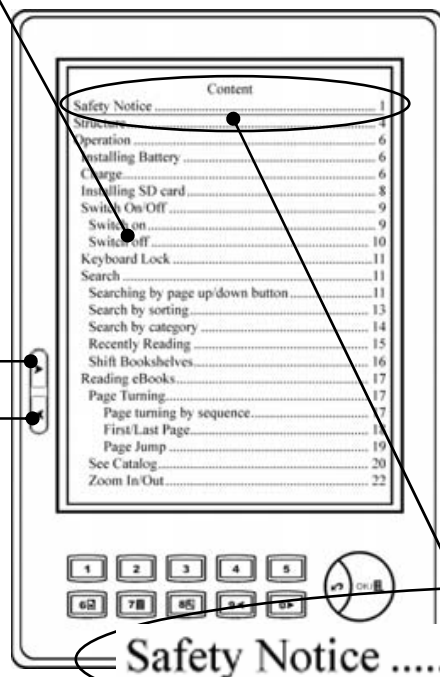
Previous Next

Hyperlink in current page

Next
Previous

Number key 0

Number key 9



Safety Notice

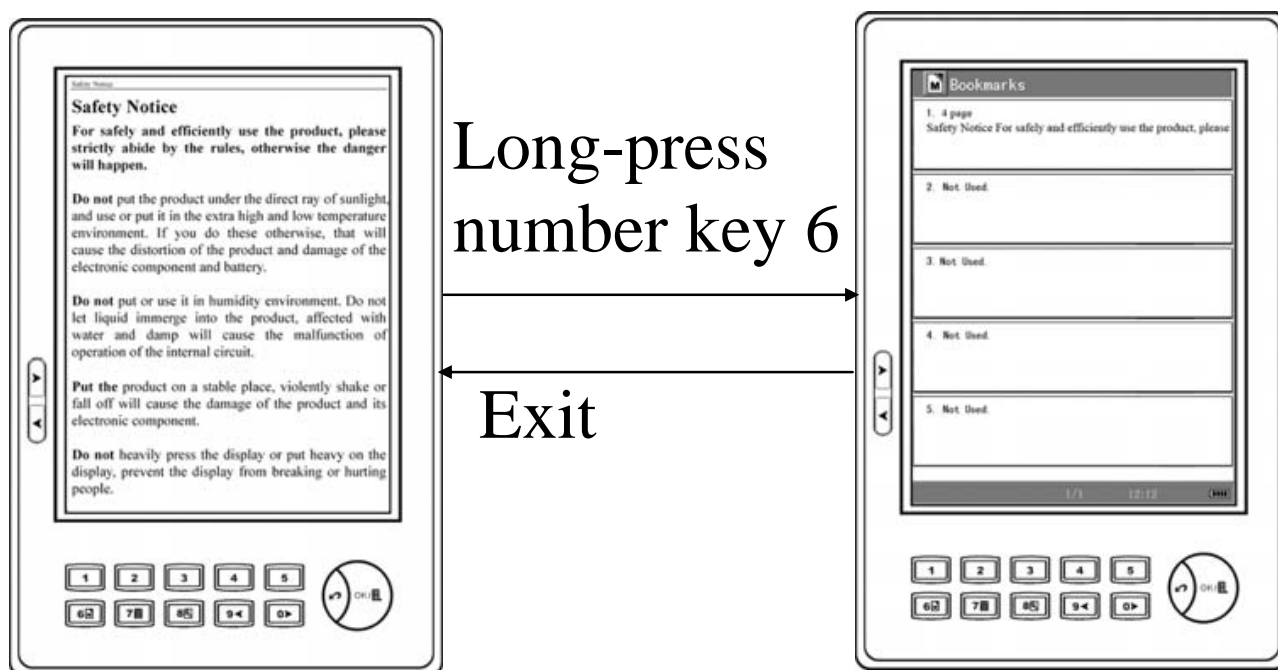
1

Bookmark

Bookmark for PDF & EPUB formats

To add a bookmark

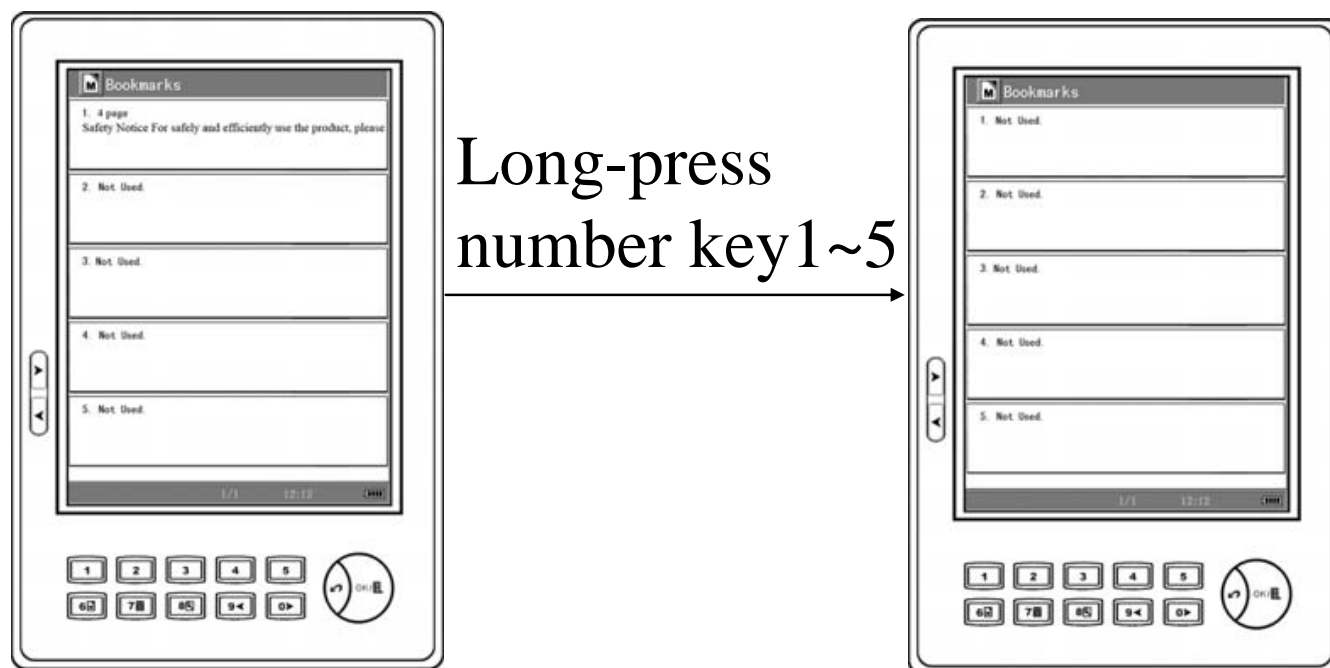
Under the text interface of EPUB file, press the number key 6 to add a bookmark, long-press the number key 6 to enter into bookmark interface.



To clear a bookmark

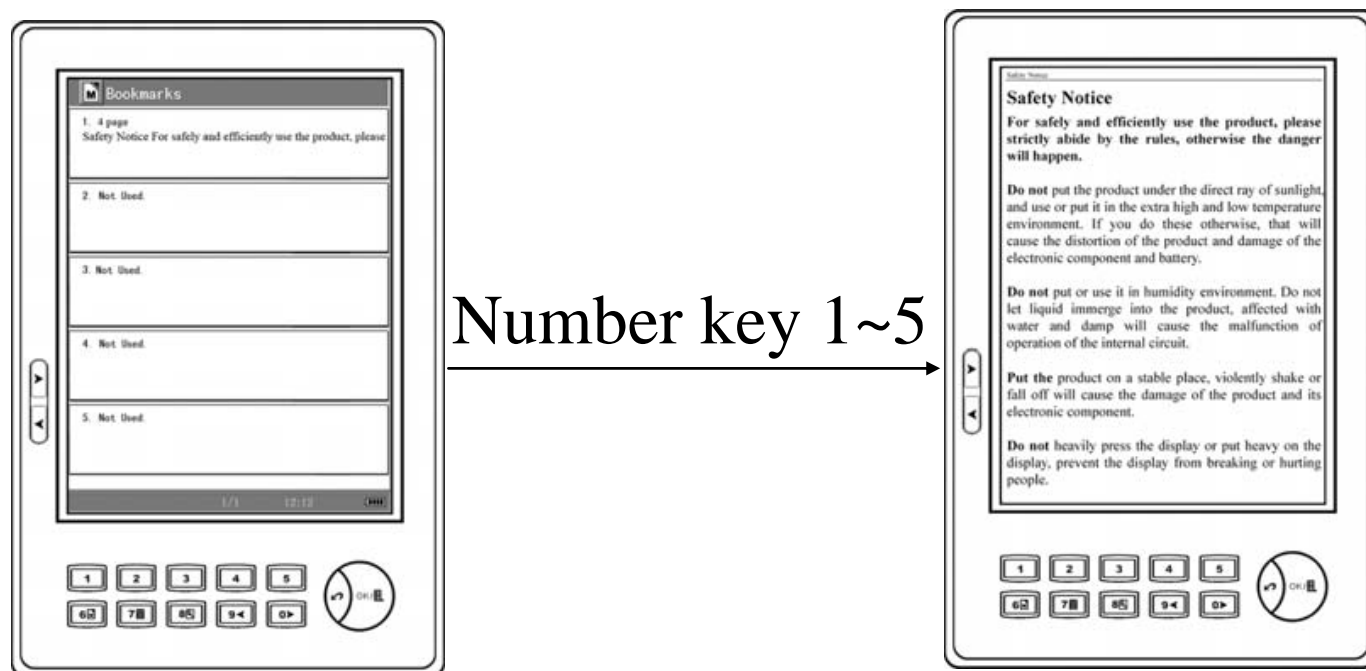
Under the bookmark interface, long-press the number

keys 1~5, then the corresponding bookmark is cleared.



How to skip to the page with bookmark

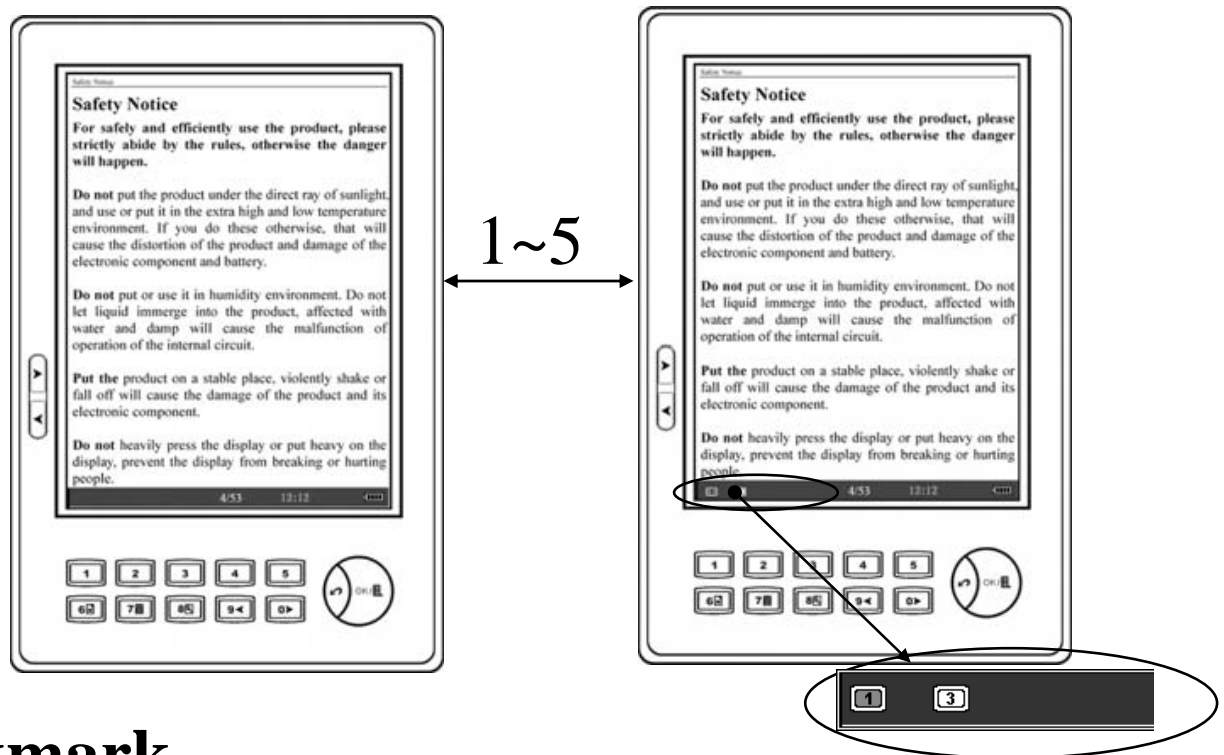
Under the bookmark interface, press the number keys 1~5 to skip to the page with bookmark.



PDF file supports this function under ADOBE reading mode.

Bookmark for other formats

- ❏ The current page without bookmark
- ❏ The current page with bookmark
- If the number keys aren't used as bookmark, the icon of the number key won't show in the status bar.



Add Bookmark

Press the number keys 1~5 to directly add bookmarks.

Replace Bookmark

If the current number key you want to use as the bookmark is already used, you may long press the current number key within 2 seconds, then the previous page with bookmark will be replaced by the current page.

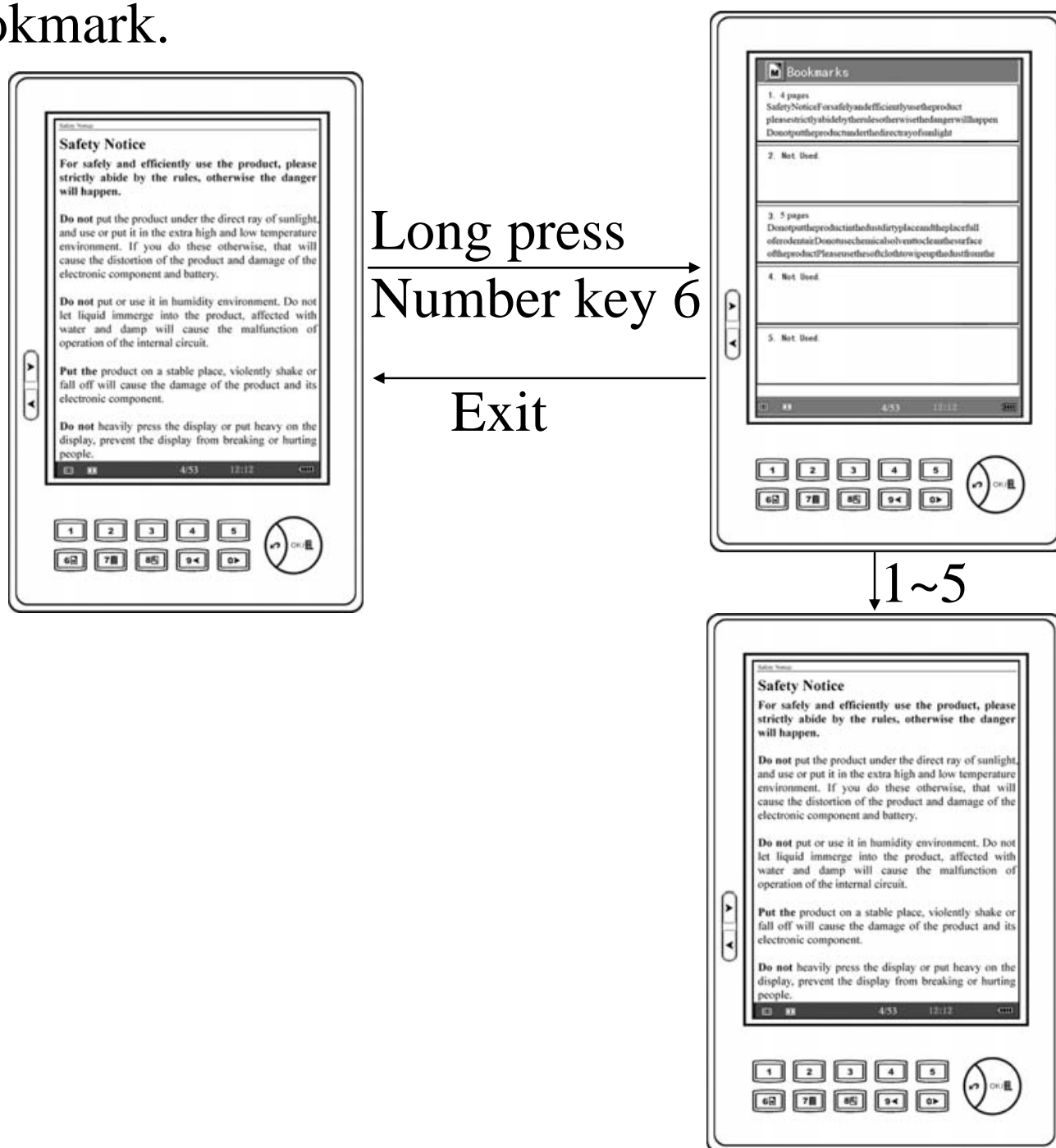
Clear Bookmark

Go back to the page with bookmark; press the number key to clear the bookmark.



Check Bookmark

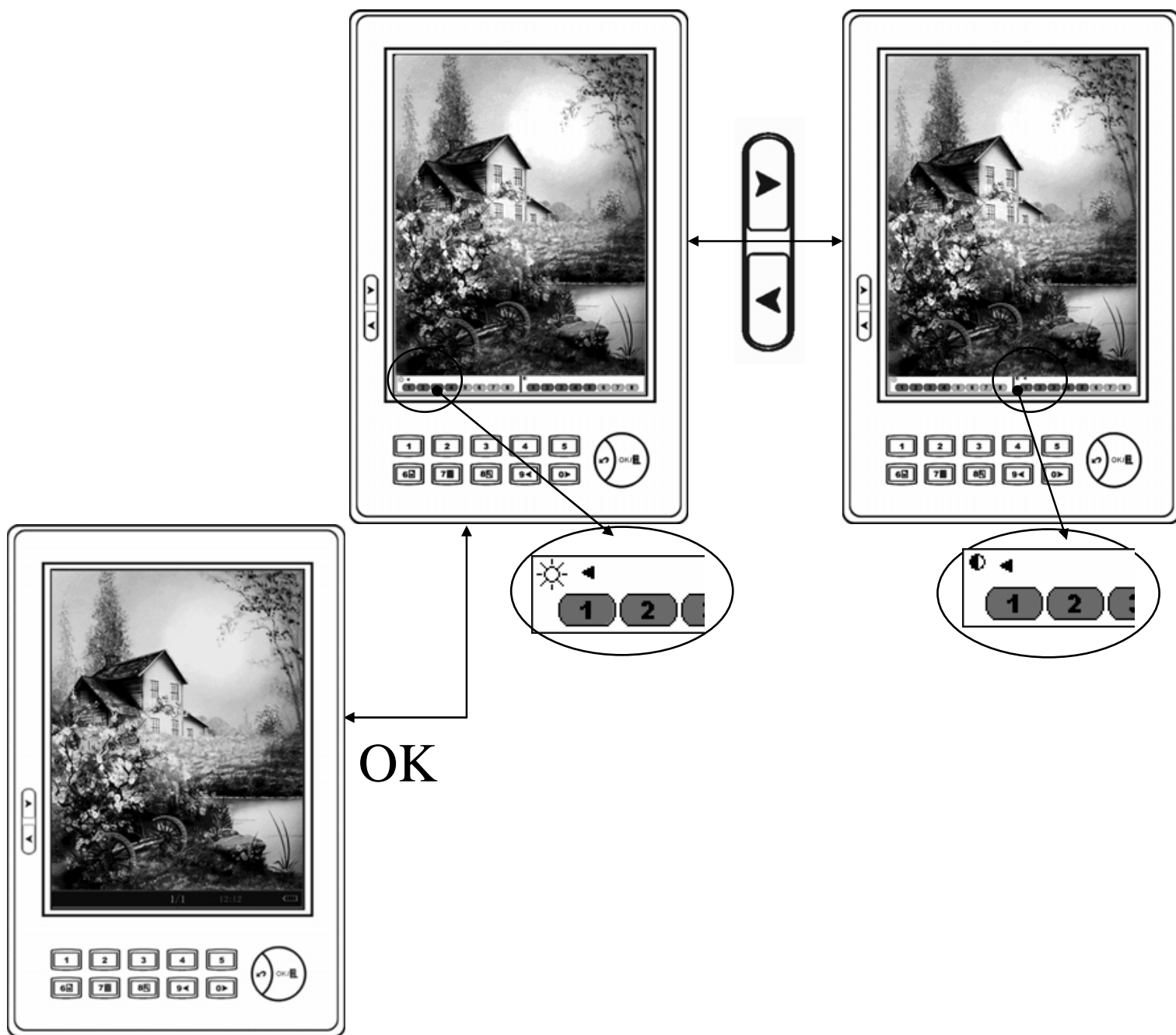
Long press the number key 6 within 2 seconds to enter into checking bookmark status, then all the details of the bookmark will be listed.

Press the number keys 1~5 to jump to the page with bookmark.

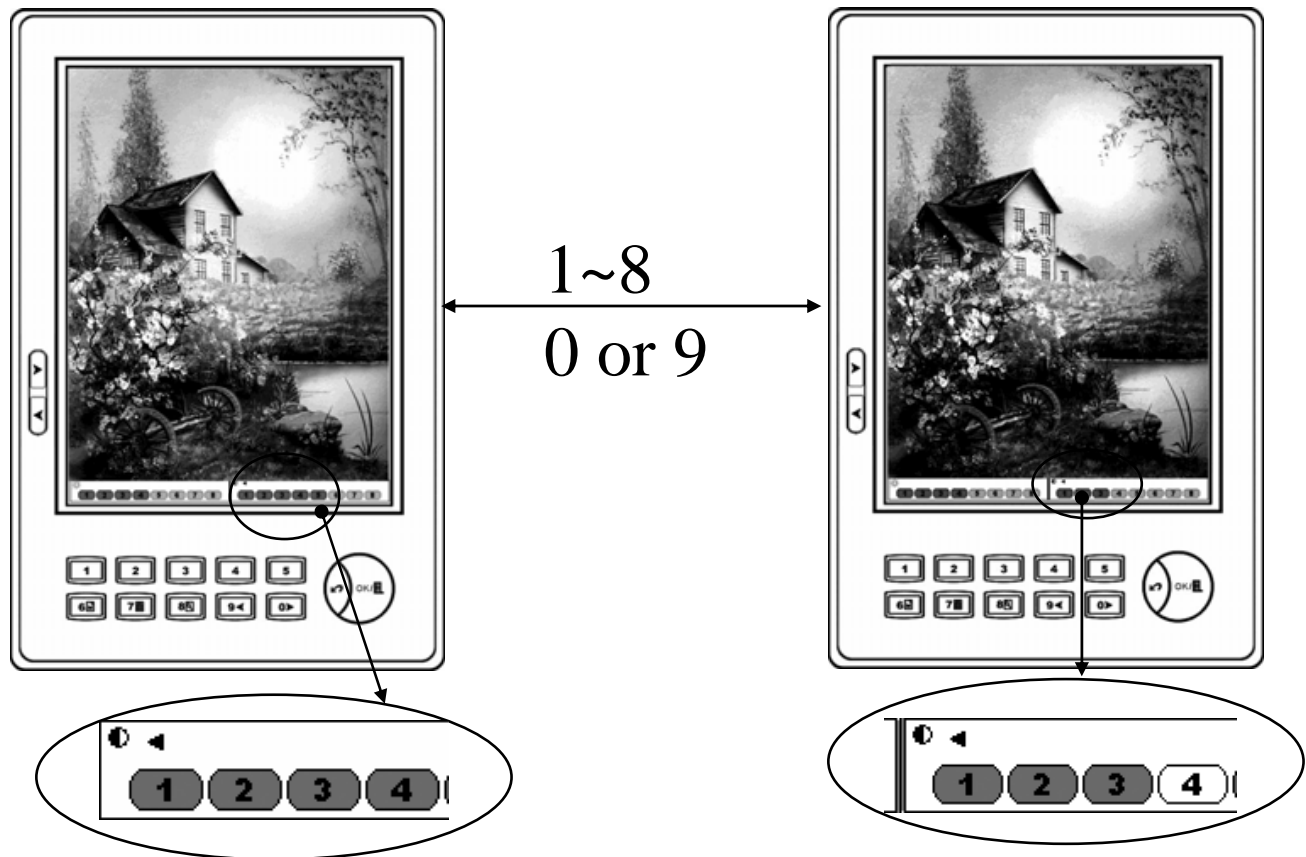


Adjust the contrast and brightness of pictures

When browsing pictures, the contrast and brightness can be adjusted, press OK and use  to switch between contrast and brightness, the icon  will be changed as well.



Press the number keys 1~8 to adjust contrast or brightness directly, press the number keys 9 and 0 to configure levels, press OK to finish configuration.

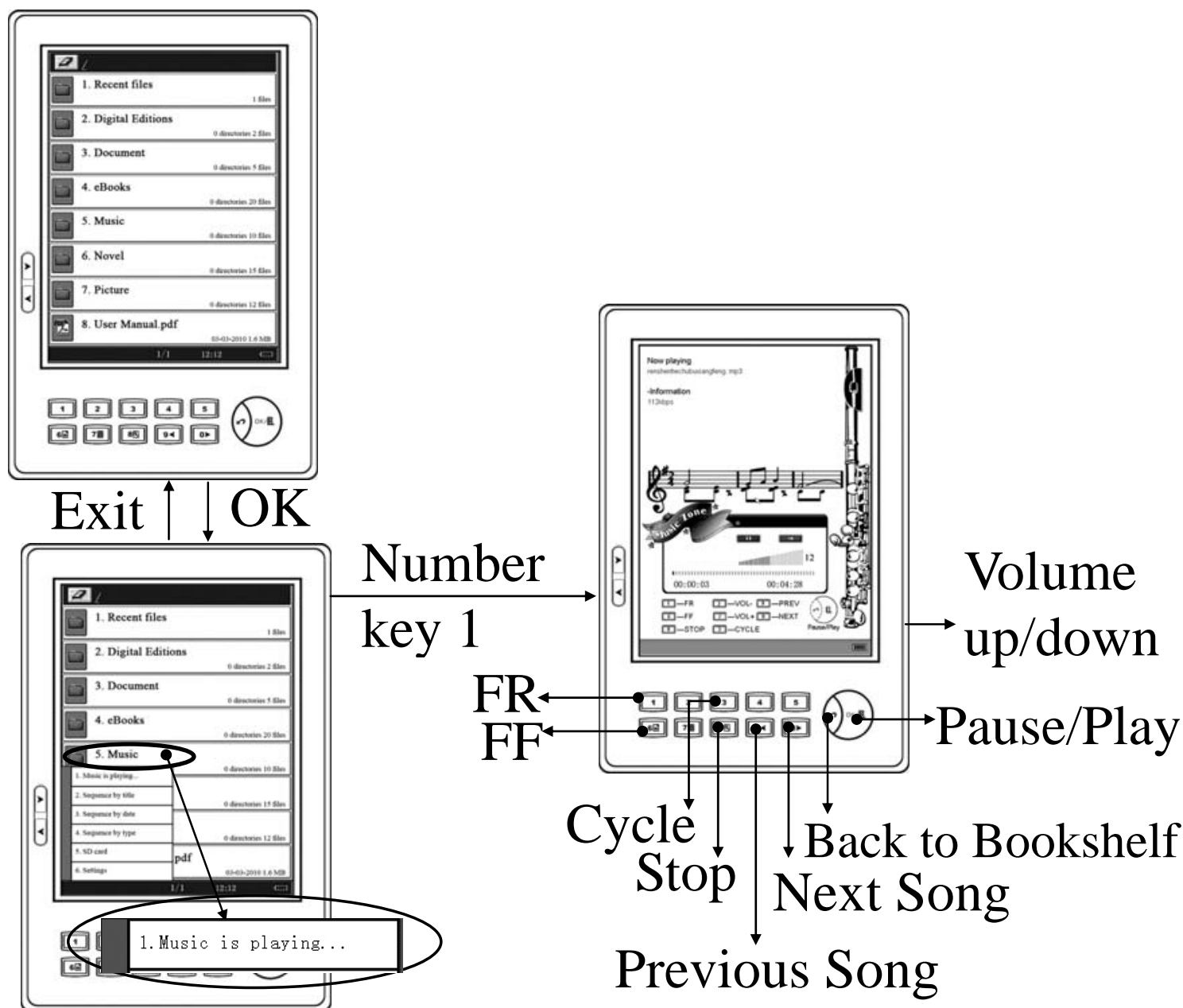


The image within 600x800 pixels is strongly recommended.

Audio

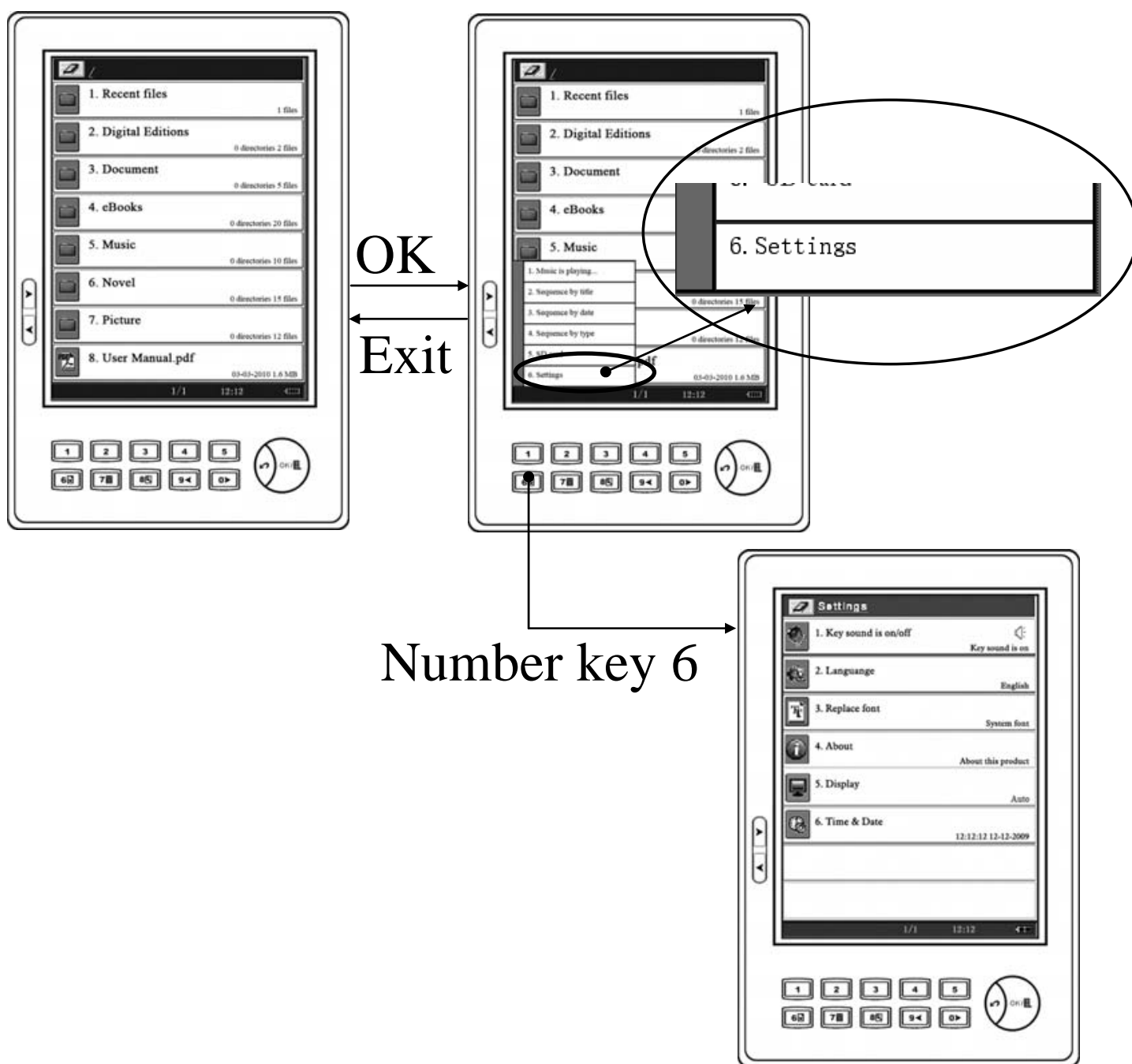
Under the bookshelf interface, press the number key to play the MP3 file. During the playing process, press OK to display the menu, and then press the number key 1 to enter into Music Play function.

The Music Play function will display the all information of the current MP3, including song's name, baud rate, playing time etc.



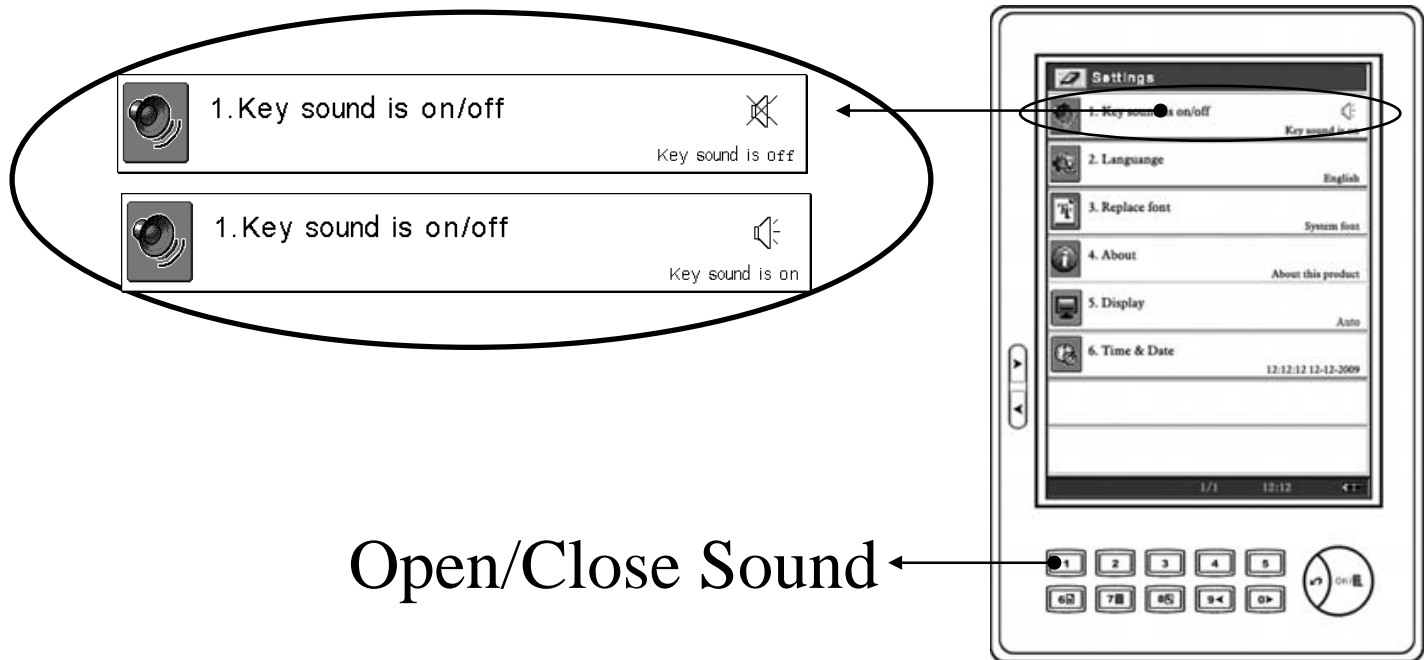
Settings

Under the bookshelf interface, press OK to display menu, press the number key 6 to enter into the settings function, which includes key sound setting, language setting, replace font, about, display gray level and time & date.



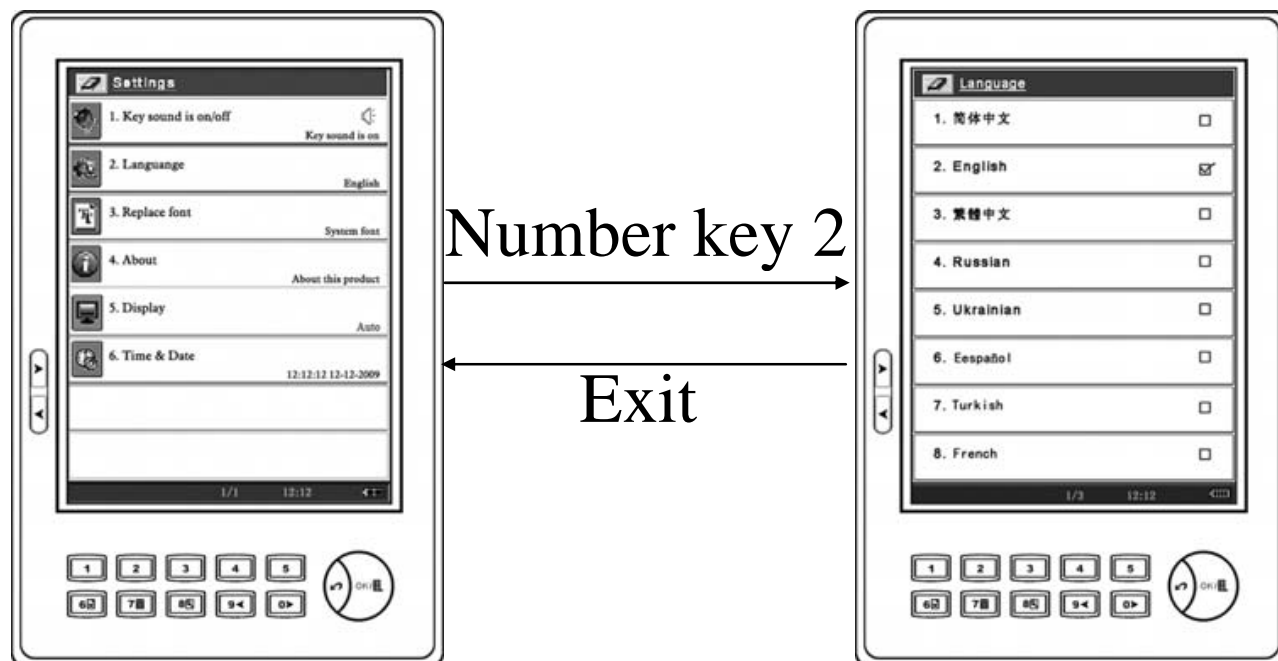
Key Sound

Under the settings interface, press the number key 1 to open/close the sound of the key.



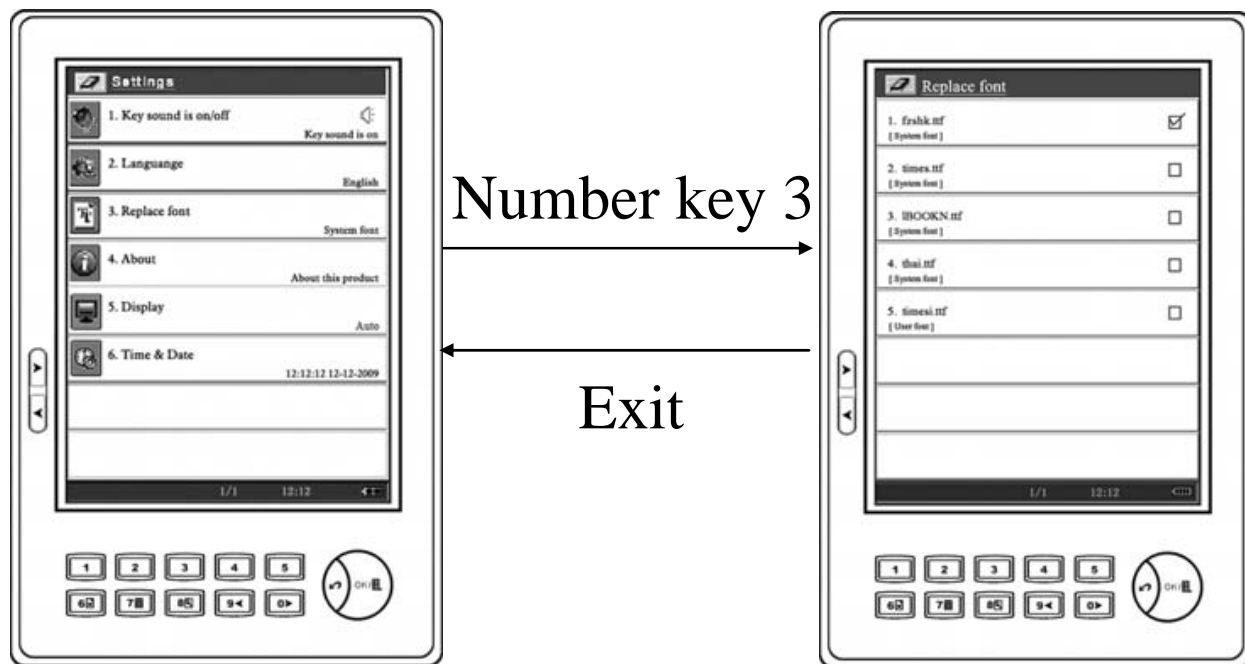
Language Setting

Under the settings interface, press the number key 2 to enter into language selection interface, select language by pressing the opposite number key.



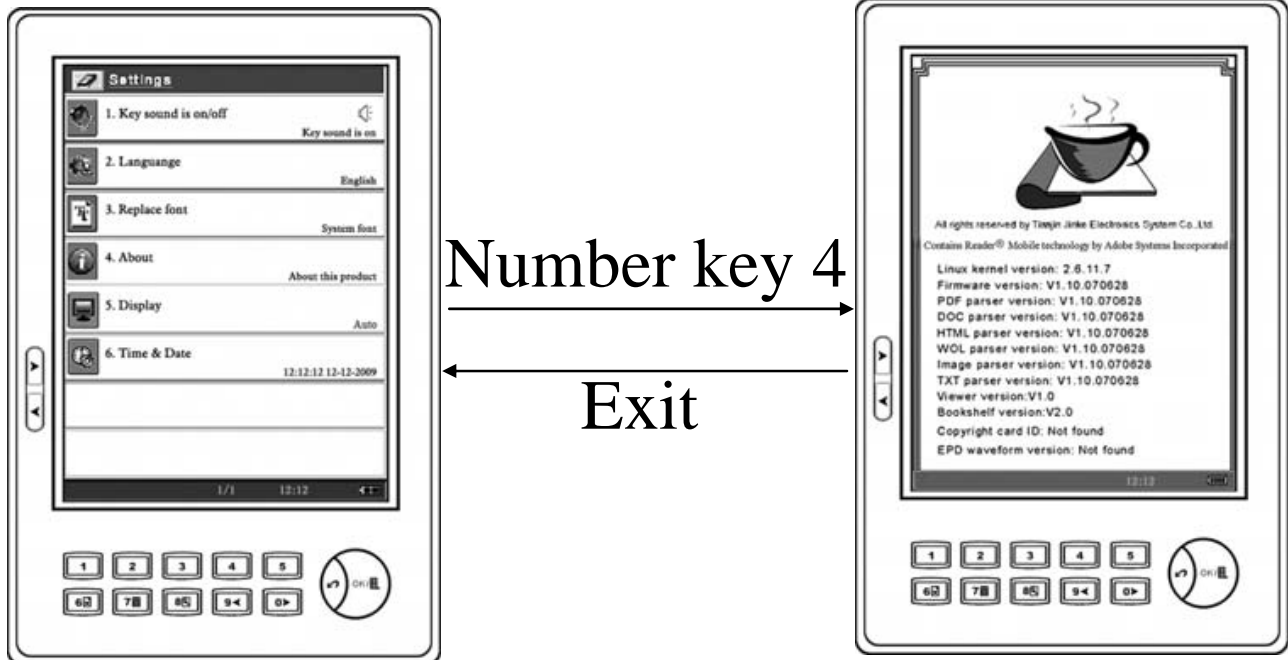
Replace Font

Under the settings interface, press the number key 3 to enter into the replace font interface, and select the opposite key to choose font. (The TTF files are saved in the fonts folder of the root of SD card.)



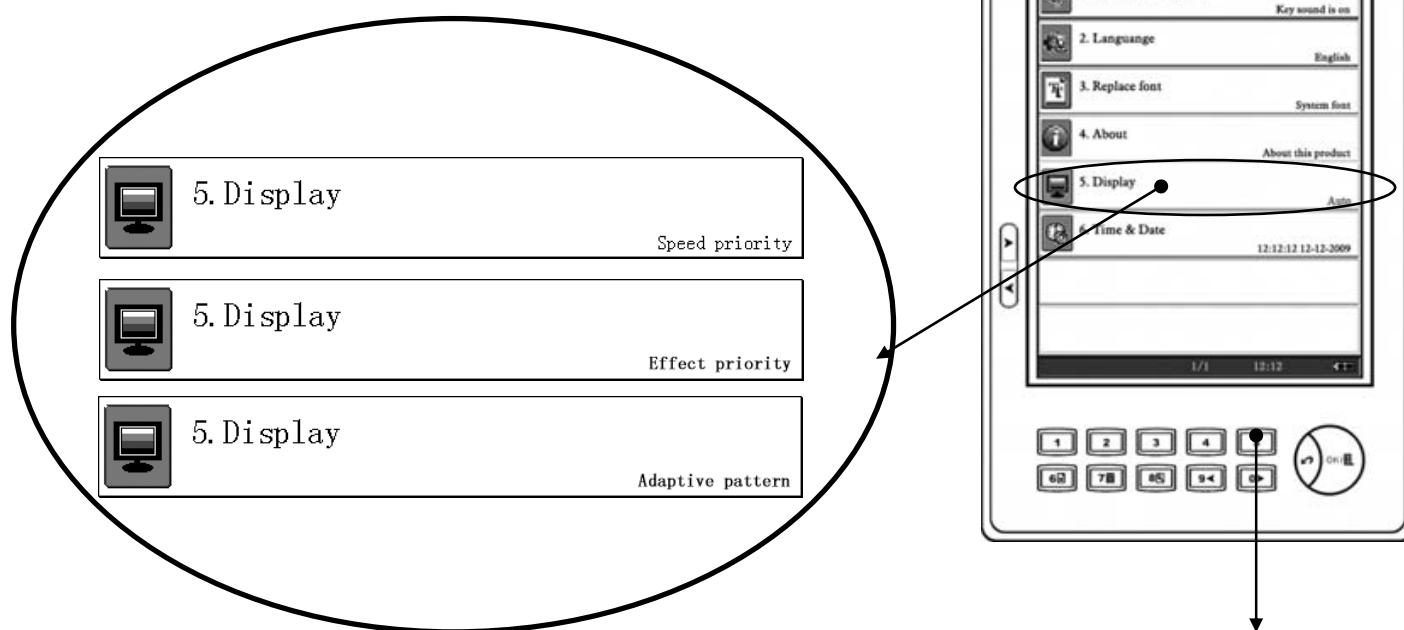
About

Under the settings interface, press the number key 4 to check the information of system version.



Displaying Modes


Under the settings interface, press the number key 5 to change the displaying modes: Speed priority; Effect priority and Adaptive pattern. Speed priority is the mode to display in 4-level grayscale, which is good for reading words, page turning speed is faster. Effect priority is the mode to display in 16-level grayscale, which is good for watching pictures. Adaptive pattern is the mode to automatically shift between Speed priority mode and Effect priority mode, when opening the image file, it is displayed in 16-level grayscale; after closing the image file, and it will be automatically displayed in 4-level grayscale.

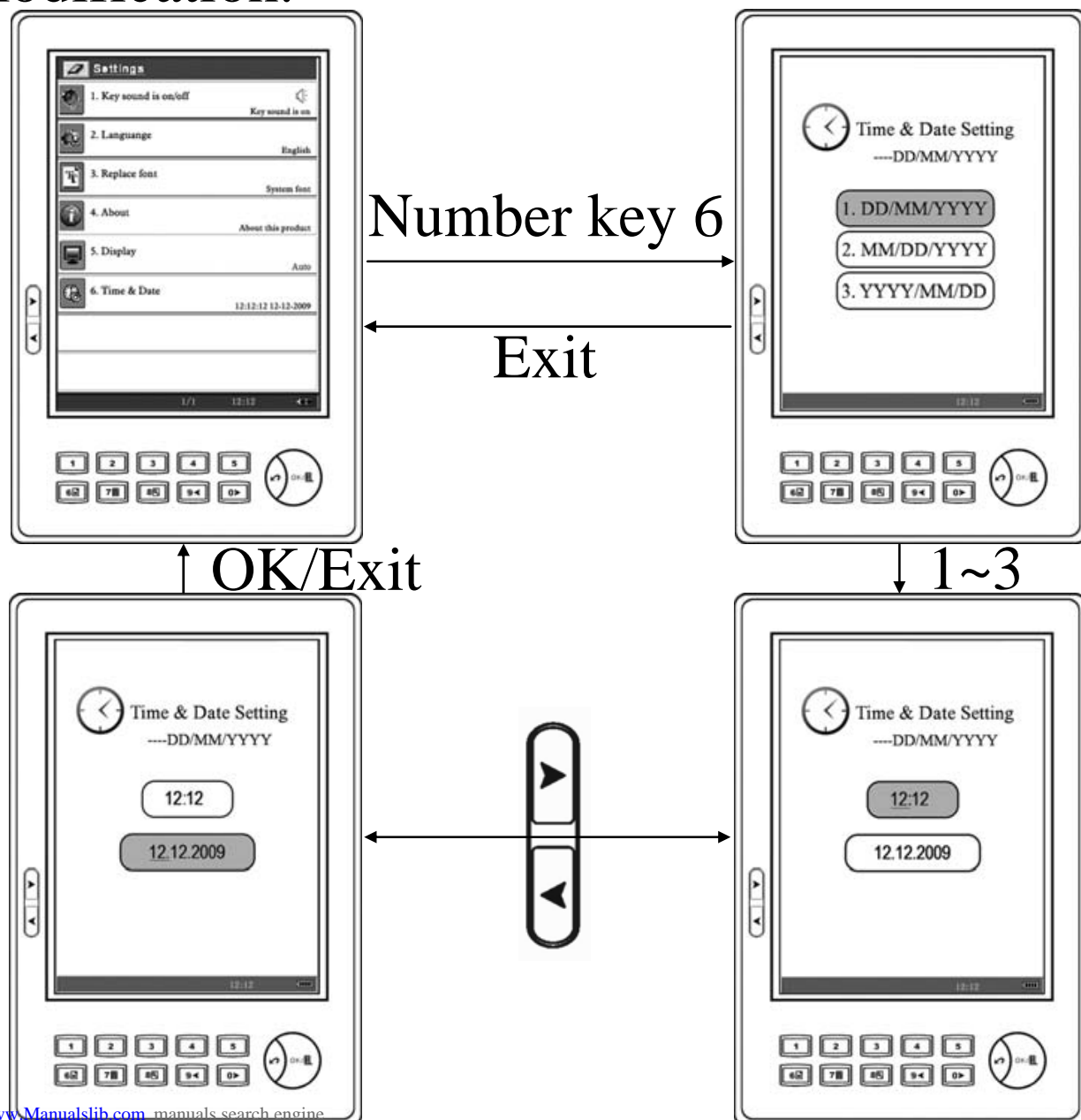


Shift Displaying Modes

Time & Date

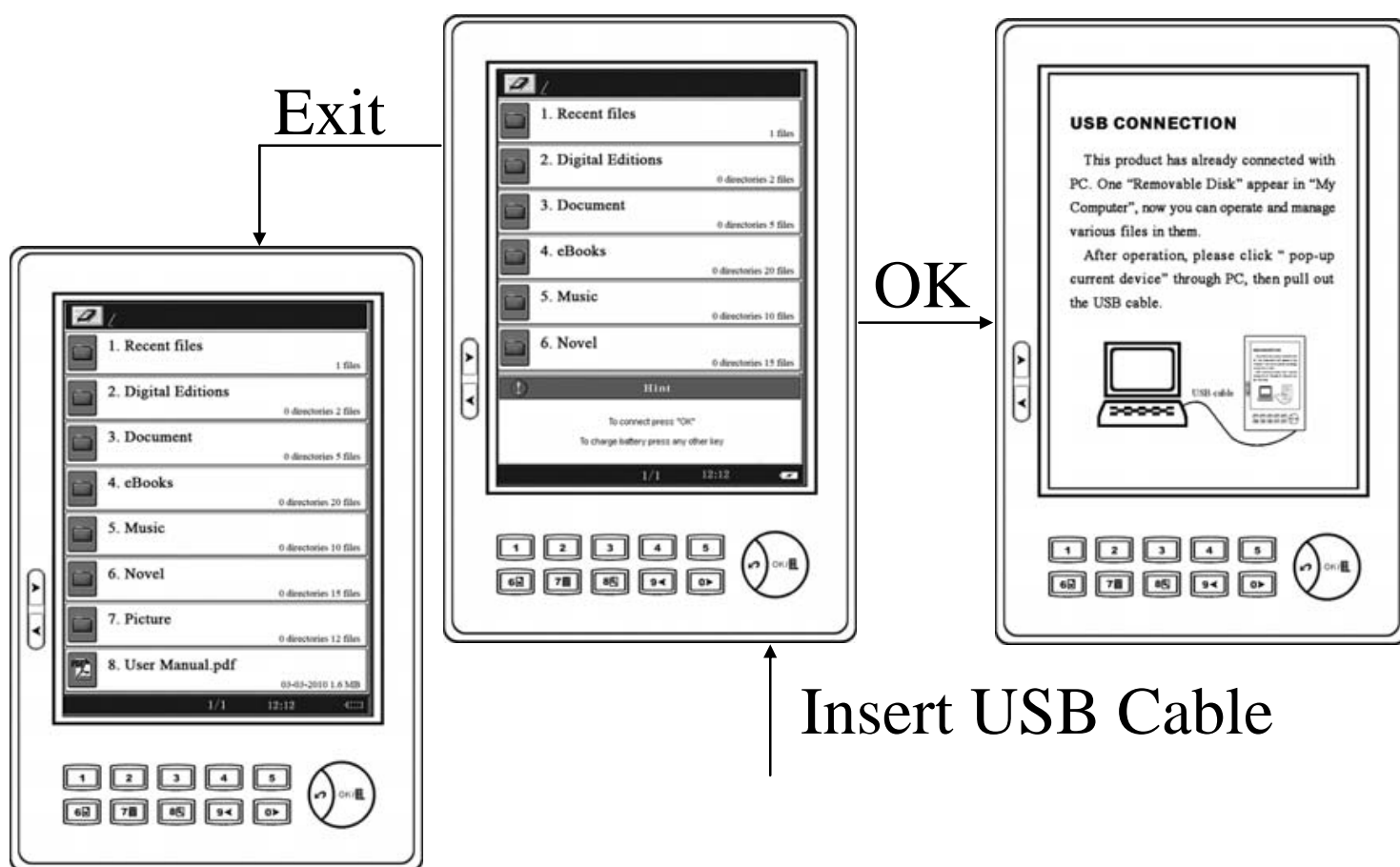
Under the setting interface, press the number key 6 to enter into Time & Date Setting function.

Press 1~3 to select a Date Format, and then press  key to switch between Time and Date, then press the number keys 0~9 to set Time and Date. When finish setting, press OK to confirm to save the setting, press Exit to quit this function without saving the modification.



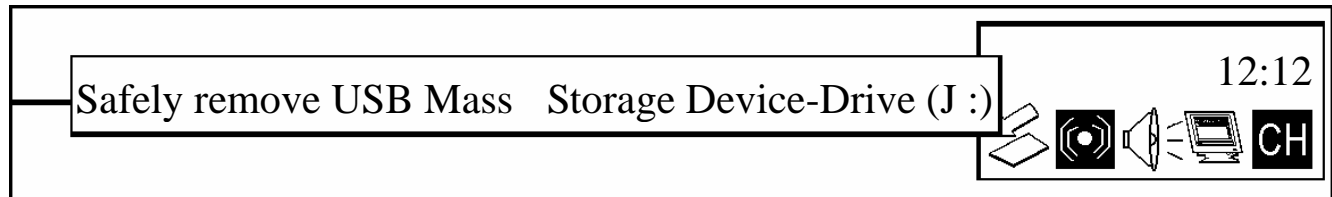
USB Connection

The device can directly connect the computer by the USB cable which supports the plug and play function. After connection, the “Removable disk” will automatically display in the “My Computer”. (Note: before disconnecting the USB cable, the operations of book reading can not work.) See the following picture:



Under the Windows system, the data don't

immediately copy to the SD card, but firstly copied to the cache, therefore please select “Safely remove USB Mass Storage Device-Drive (J :)” before pull out the USB cable.



After pull out the USB cable, it will go back to the bookshelf interface.

Exception

When the product can not normally work, press the reset button to restart.

If the above-mentioned method can not work, please long press the reset button over 3 seconds, then press the power on button.

Specifications

Hardware	CPU: Samsung Arm9 400MHz
Screen	ePaper (E-Ink technology) 6 Inches 600x800 pixel 16 greyscale
Dimensions	184mm (L) x120.5mm (W) x9.9mm (H)
Operating System	Linux OS
Format Natively Support	PDF, EPUB, TXT, HTML, DOC, RTF, MP3, WOL, CHM, RAR/ZIP, BMP, JPG, TIF, PNG, GIF, PPT, PDB, FB2, DjVu, LIT
Storage	NAND FLASH
Memory	SDRAM:64MB Internal 2MB NOR FLASH
I/O	3.5mm stereo audio jack for earphone USB 2.0 Port SD slot (support 16GB capability)
Weight	220g (include battery)
Battery	Li-ION 950mAh
Working Temperature	0°C to 40°C
Keeping Temperature	-20°C to 55°C

After-sales Service Guide

Terms of Limited Warranty Service

Under the terms of Limited Warranty Service, Tianjin Jinke Electronics System Co., Ltd. will provides free repair for any problems of quality.

The Warranty period of 12 months on the product (without present) starting on the original date of purchasing and 3 months on accessories that means Jinke provides warranty service without charge for: limited repair and free maintenance (not including the fault and damage caused by wear material, artificial factors by customer and non-quality problem etc.)

The appearance of product in the warranty period without nick and artificial damage, with invoice (valid receipt), warranty service card (kept by customer), these will be the proof for after-sales service. Jinke can check the warranty service card of customer. (This filled in by customer, and sends it to Jinke) If after repair, the products still appear the same fault, which can be exchanged (not including accessories and present). If you have any questions, please contact

service department of Jinke.

The warranty period for the repaired product is the rest time of warranty period, or 90 days starting from the repairing date. The longer time is counted as the warranty period.

Under the requirement of Jinke or its licensing service center, customer should provide invoice (valid receipt) and warranty service card, or other information which can prove the date and place of purchasing the product.

Any charges before the product arrives Jinke or its licensing service center should be the expenses of customer.

What this Warranty Does not Cover:

- * Damage resulting from shake, collision, shedding and misuse;
- * Saving under improper condition; exposing in unsuitable environment such as humidity, higher or lower temperature; immersed by food, smear or liquid; caused by force majeure and other factors.
- * Failure resulting from change, connect, repair

(including but not limited to use of any backup component, other than that authorized by Jinke) ,misuse, neglect, abuse, accident, modification and incorrect installment, error operation by customer, or other factors surpass the reasonable usage and control of Jinke, including lacking of wear component and normal abrasion.

- * Jinke never receive notice of failure or quality problem of the product from customer within the warranty period.

- * Deleted, damaged, altered or forged series number of the product.

- * Any non-Jinke products, including those that Jinke may not procure and provide with or integrate into Jinke product.

Within the warranty period, customer should do:

- * Product or accessories should be sent to the purchasing place for repair or exchange.

- * Product or accessories should be sent to licensing service center.

- * Customer will receive the bill of the repair which without the limited warranty.

- * Customer will pay expenses of re-installment of the

product.

* If the warranty period expires, the expenses of maintenance and service will be charged according to the general service policy of Jinke, and provide a 90 days warranty period after the paid repair. And the product will enjoy the policy of after-sales-service for life.

Benefits provided by this warranty append on the all rights and compensation of the compulsory laws in any country (or regions).

Jinke is not responsible for the responsibilities and obligations that surpass the responsibilities and obligations announced in this warranty, and do not authorize its licensing service center or entity to bear.

No advanced notice for any change of all terms of warranty, product functions and specifications.